

**SAUGATUCK DOUGLAS AREA  
5 YEAR PARKS & RECREATION PLAN  
2014 – 2019**

**(ADD PIC)**

**CITY OF VILLAGE OF DOUGLAS**

**SAUGAUCK TOWNSHIP**

**CITY OF SAUGATUCK**

**SAUGAUCK PUBLIC SCHOOLS**



**Table of Contents**

Introduction

Planning Process

Administrative Structure and Budgets

Community Description

Environmental Characteristics

Existing Land Use

Parks and Recreation Inventory

System Overview

Parks and Recreation Programs

Regional Recreation

Commercial Recreation

Basis for Action Programs

Capital Improvements Schedules

Appendix



## INTRODUCTION

Recreation is a basic part of life for residents and visitors of the area that includes the City of Saugatuck, the City of the Village of Douglas, Saugatuck Township and the Saugatuck Public Schools. The planning area supplies all four main recreation categories for residents of all ages, including elements of physical, cognitive, social and environmentally related recreation. The natural beauty of area rivers, lakes, marshes, dunes and Great Lake beaches make this an ideal setting for passive and active recreational pursuits. Recreation choices range from touring art galleries and shops to hiking and enjoying the beaches and sand dunes. Visitors during all four seasons enjoy the natural beauty of the area. Many year-round residents discovered the Saugatuck Douglas area as a tourist and many full time residents began as summer visitors. It is a community to which one always wants to return.



The planning process culminating in this plan was intended to assess existing community recreational facilities in order to:

- Identify deficiencies and opportunities;
- Solicit and incorporate community input;
- Identify recreational development strategies;
- Establish a course of action for the next five years;
- Prioritize recreation projects; and,
- Identify potential funding sources.



A secondary purpose of the plan is to evaluate the progress of recreation planning in the area over the past five years. Recreation can be separated into four main categories: physical, social, cognitive, and environmentally related recreation. The former category focuses on sports and various physical activities. Social recreation looks at social interaction opportunities. Cognitive recreation deals with cultural, educational, creative, and aesthetic activities. Environmentally related recreation requires the natural environment as the setting or focus for activity. Each of these categories relates to the others and all four are an important part of human development. The Saugatuck Douglas area is fortunate to be able to offer all four types of recreation to its residents and visitors.

This plan was prepared to assess the existing recreational attributes of the area, to determine where recreational needs exist, and to outline a program for meeting those needs. The following pages contain a discussion of the planning process used in preparing the plan, and a summary of the area's administrative structures, budgets, and maintenance initiatives.



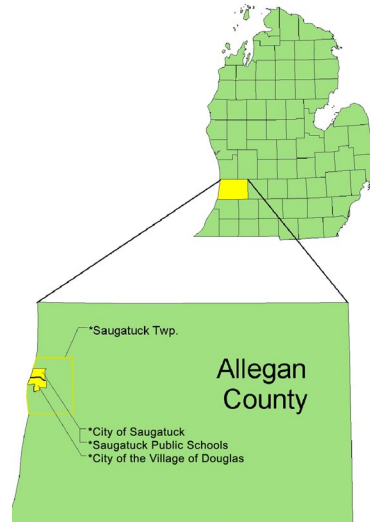
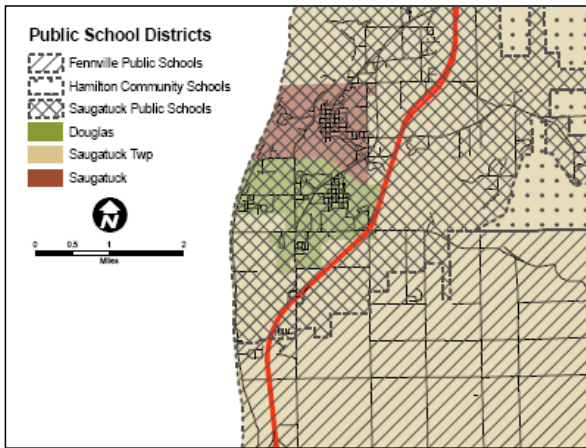
The Community Description section includes detail on the area’s population, age distribution, employment characteristics, income and seasonal populations as a means of understanding potential recreation needs of the area. Natural features including water, soils, topography and climate are outlined to help evaluate what the area has to offer for recreational pursuits.

During initial planning efforts associated with the 2008 joint Recreation Plan, each participating entity evaluated its role in regional recreational offerings. Since the initial plan, there has been ongoing review, analysis, and public discussion of existing facilities and recreational programming in the City of Saugatuck, Saugatuck Township, City of the Village of Douglas, and Saugatuck Public Schools. Those efforts, along with activities associated with the update of the original plan, form the basis of programs identified in this plan. The programs, set forth as action elements, include a capital improvements program for the next planning cycle.

The final section of the plan contains verification of the plan’s public hearing, adoption, and transmittal to designated review bodies.

**Location**

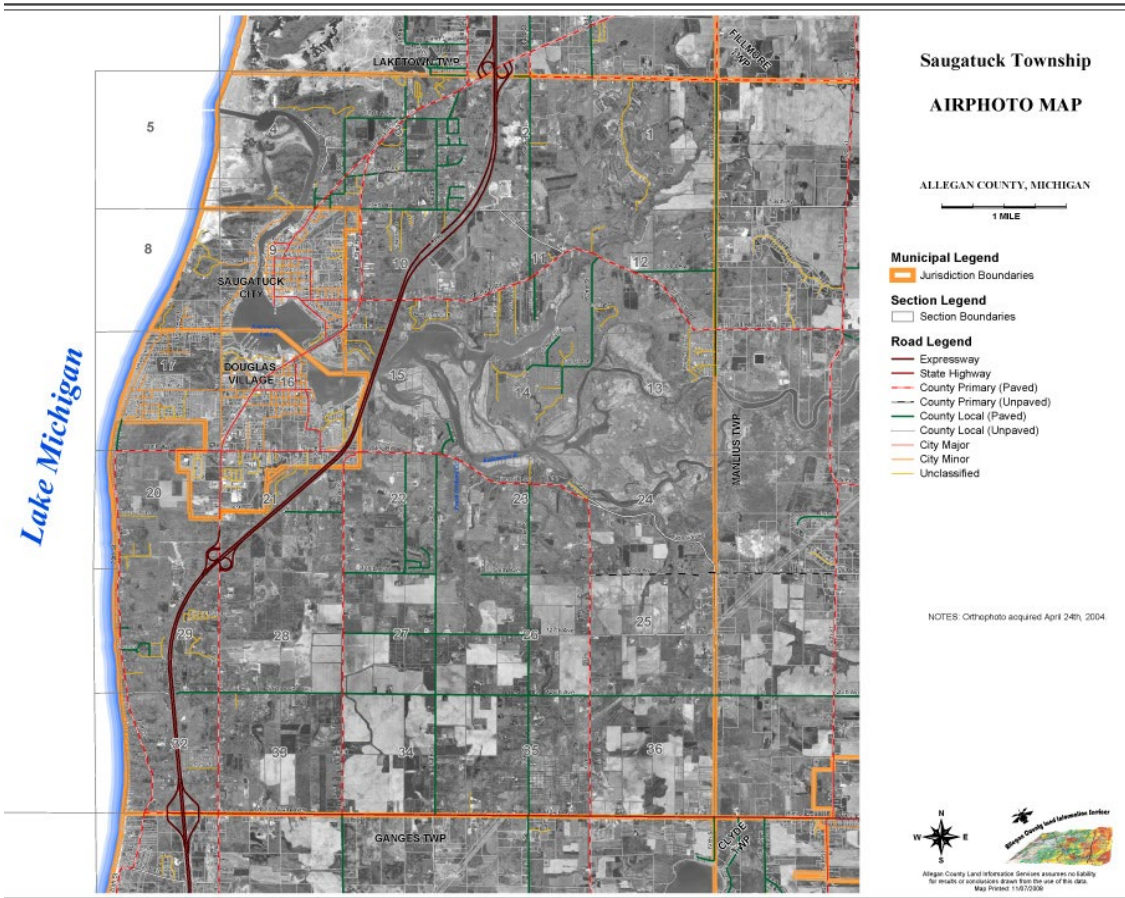
The City of Saugatuck, City of the Village of Douglas and Saugatuck Township are located in Allegan County. The communities are nestled along the Kalamazoo River and Kalamazoo Lake near the Lake Michigan shoreline. The Saugatuck School system serves both cities and most of the more populated areas of the township. U.S. 31 and



the Blue Star Highway traverse the area bringing visitors from points south, including metropolitan Chicago.



Tri-Community Aerial Map





## PLANNING PROCESS

The 2014-2019 Saugatuck Douglas Area Parks and Recreation Plan is a successor to the 2008 Plan. The Parks and Recreation Plan was prepared by the City of Saugatuck, Saugatuck Township, the City of the Village of Douglas, and Saugatuck Public Schools 5-Year Recreation Planning Committee. This ad hoc joint committee, comprised of eight members, was appointed by the supervising boards and councils of the four participating local units of government (City of the Village of Douglas Council, Saugatuck City Council, Saugatuck Township Board, and the Saugatuck School Board).

The capital improvements schedules were prepared by each unit of government based on identified need and financial capabilities. This information was compiled for placement in the updated plan.

The City of the Village of Douglas' program of recreation capital improvements was originated by the Council's Parks and Recreation Committee.

The City of Saugatuck's capital improvement plan was developed by ~~the Public Works Committee of~~ the City Council at committee meetings.

The capital improvement schedule for Saugatuck Township was developed by the Saugatuck Township Parks Commission.

The Saugatuck Public School's needs were identified by the Superintendent Athletic Director, the coaches, the P.E. teachers, and the school board.

A joint public hearing on the plan was conducted on \_\_\_\_\_ and the plan was adopted by the Douglas City of the Village Council, Saugatuck City Council, Saugatuck Township Board, and the Saugatuck Public School Board soon thereafter.





**ADMINISTRATIVE STRUCTURE AND BUDGETS**

The City of the Village of Douglas, City of Saugatuck, Saugatuck Township, and Saugatuck Public Schools all operate and maintain separate public recreational facilities. However, all four units of government cooperate on recreation planning and recreation programming, and many facilities are shared or are under joint use agreements. A discussion of recreation administration in the four units of government follows.



**CITY OF THE VILLAGE OF DOUGLAS**

Administration and Planning

Administration and recreation facility planning in Douglas is coordinated by City staff, which reports to City Council. Recreation master planning is coordinated by the Cities of Saugatuck and Douglas, Saugatuck Township and Saugatuck Public Schools.

Maintenance

Maintenance of recreational facilities is performed by the Public Works Department, under the direction of the City Manager, who reports to City Council.

Programming

Recreation programming is performed by the Saugatuck Schools Recreation Department, which administers the area's summer recreation program. In addition, Saugatuck Public Schools and the Community Education Program provide many recreational programs and leisure-time activities.

2013/2014 Budget Parks and Recreation \$140,800 General Fund

**CITY OF SAUGATUCK**

Administration and Planning

The Saugatuck City Council administers and plans the City's recreation system through its ~~Public Works Committee. The committee consists of three Council members, who are aided by the City Manager and overseen by the full Council. Recreation master planning is performed by the Public Works Committee of the City, with the approval of the City Council City Manager and~~



Zoning Administrator. Recreation master planning is performed by the City Council and may include input from other boards, commissions, and committee on an as needed basis.

Maintenance

Maintenance of Saugatuck's recreational facilities is performed by the City's Public Works Department, under the direction of the Superintendent of Public Works and the City Manager. The City Council sets policy on public works issues; these policies are implemented by the Public Works Committee, City Manager, Zoning Administrator, and Public Works Department.

Programming

Recreation programming for the residents of the City of Saugatuck is directed by the Saugatuck Public Schools community Recreation Department, which administers the area's Summer Recreation Program.

2013/2014 Budget Parks and Recreation \$417,225 General Fund

**SAUGATUCK TOWNSHIP**



Administration and Planning

The Saugatuck Township Parks Commission is authorized to operate and maintain Township parks. The commission has five elected members.

Recreation master planning for Saugatuck Township is coordinated by the Cities of Saugatuck, Village of Douglas, Saugatuck Township and Saugatuck Public Schools. Representative members for the Township are part of the Saugatuck Township Parks Commission.

Maintenance

Maintenance of recreational facilities is performed by an outside contractor under the direction of the Township Parks Commission.

Programming

Recreation programming for the residents of Saugatuck Township is directed by the Saugatuck Public Schools Community Recreation Department, which administers the area's Summer Recreation Program.





- 2013/2014 Budget Parks and Recreation \$ 13,550 General Fund

### **SAUGATUCK PUBLIC SCHOOLS**

Saugatuck Public Schools operates and maintains numerous athletic and recreational facilities, all of which are available to the general public at appropriate times. Many of the area-wide summer recreational programs operate on school property.

- Administration and Planning

Administration and planning of the district's recreation facilities and programs is the responsibility of the Athletic Director, Recreation Director, Director of Business, Physical Education teachers, Athletic Booster Club and the school board. The Superintendent oversees the overall administration of the facilities and programming.

Recreation master planning for the school district is coordinated by the Parks and Recreation Planning Committee. The Recreation Director of Saugatuck Public Schools is a member of the committee.

- Maintenance

Maintenance of Saugatuck Public School's recreational facilities is performed by the school district's maintenance staff, under the direction of the Director of Business.

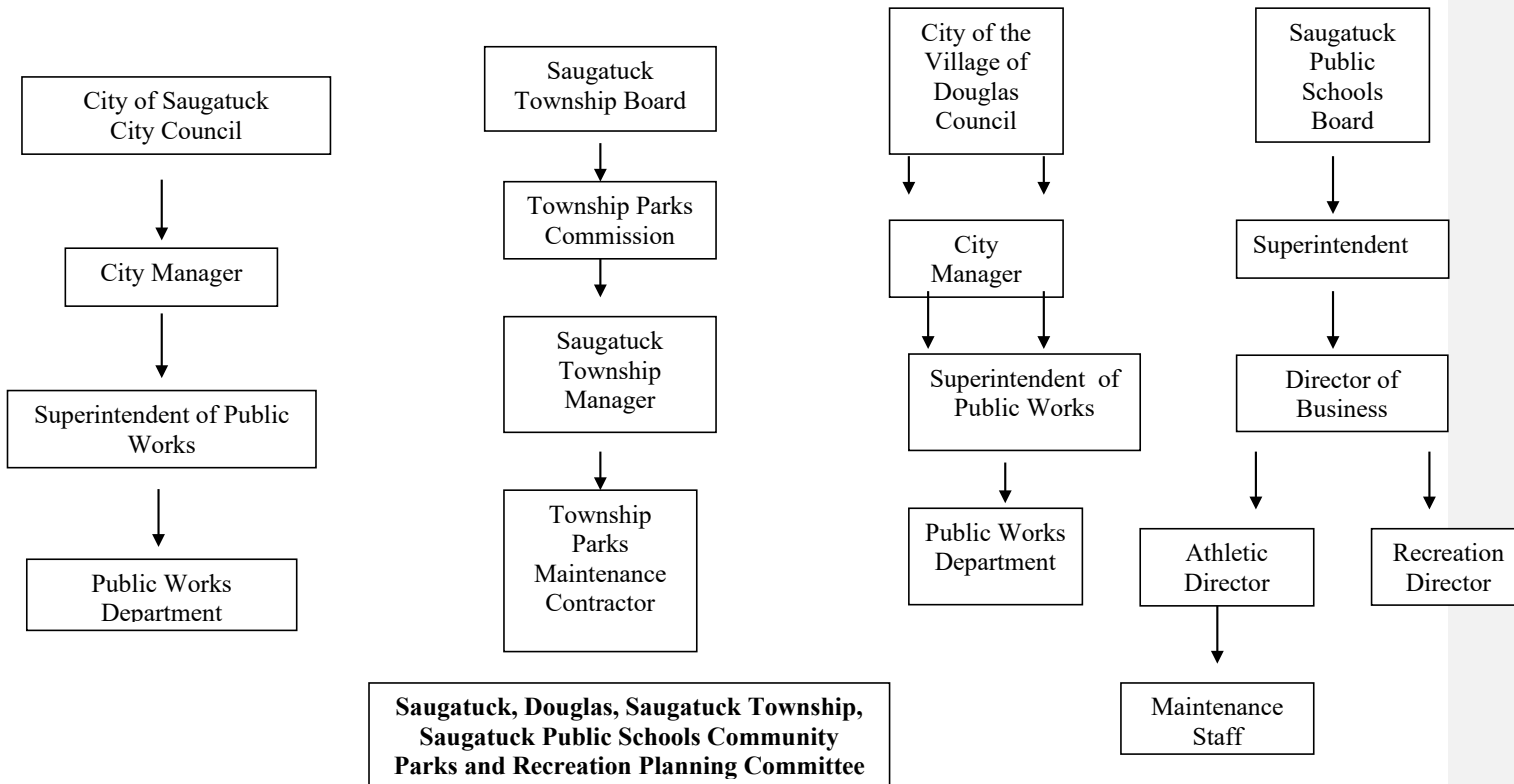
- 2013/2014 Budget Athletic Operations and Maintenance \$22,561

### **ALLEGAN COUNTY**

Allegan County operates and maintains eight parks that range in size from 4 to 320 acres. The County parks are administered by the County Parks and Recreation Commission, and include ten members with representation from the Chairs of the County Road Commission, the County Planning Commission, the County Drain Commissioner, two County Commissioners, and five members appointed by the County Board of Commissioners. Financial assistance for local parks may be available when they assist in advancing the County Recreation Plan.



**Administrative Structure Organizational Chart**





**COMMUNITY DESCRIPTION**

**SOCIO-ECONOMIC CHARACTERISTICS**

In order to determine the recreation needs of Saugatuck, Douglas, Saugatuck Township and the Saugatuck School District, an area profile is necessary to help understand the population. This profile includes population counts and projections, age distribution, and income and employment characteristics for year-round residents, as well as an estimate of the impact of seasonal residents and visitors who greatly increase demands on recreational facilities in the Saugatuck-Douglas Area.

**Population**

Population growth in the study area has been steady over the past several decades. From 1940 to 1995, the population grew from 1,783 to 5,084 residents, an increase of 185 percent. Based on the 2010 Census, the number of full-time residents increased to 5,101. Between 2000 and 2010 the total Saugatuck-Douglas-Saugatuck Township area grew 31.5 percent. Rapid development in the nearby Holland area of Ottawa County is expected to spill over into the Saugatuck-Douglas-Saugatuck Township area, and neighboring Laketown Township to the north of Saugatuck Township. Growth in Laketown Township will have a direct impact on recreation services in the Saugatuck-Douglas Area as a large portion of Laketown Township is served by the Saugatuck Public Schools District. (An estimated 1,445 persons live in the portion of Laketown Township that lies within the Saugatuck Public Schools District.)



The following table depicts decennial census population counts.

**Decennial Census Populations**

Unit	1990	2000	2010	% GROWTH
Douglas City	1,049	1,214	1,232	17%
Saugatuck City	954	1,065	925	-3%
Saugatuck Township	1,876	2,376	2,944	56.9%
<b>Total</b>	<b>3,879</b>	<b>4,655</b>	<b>5,101</b>	<b>31.5%</b>

Source: US Census, 2010



Household characteristics are indicated by the following table. Data is also provided for Allegan County as a whole. Family households refer to households with two or more family members residing in the household. Non-family households reflect one-person and non-family member households. Within Douglas and Saugatuck, the ratio of households is somewhat evenly divided between family and non-family. In Saugatuck Township family households are higher than non-family. However, in all cases, the ratios are significantly different than Allegan County as a whole where family households comprise approximately 72.5 percent of the household mix and non-family at roughly 27.5 percent. This fact has an influence on recreation programming needs. For example, 54% of the households do not have children, so the individuals in these households are likely not served by programs involving youth organized sports.

**Households**

Unit	Total Households	Family Households	Non-Family Households
Douglas City	645	279 (43.3%)	366 (56.7)
Saugatuck City	513	243 (47.4%)	270 (52.6%)
Saugatuck Township	1,276	809 (63.4%)	667 (36.6%)
<b>Total</b>	<b>2,434</b>	<b>1,331 (45%)</b>	<b>1,303 (54%)</b>
Allegan County	42,018	30,450 (72.5%)	11,568 (27.5%)

Source: US Census, 2010

The following table provides detail on household size. The average household size and average family size for the units of the project area are less than those of Allegan County as a whole.

**Household Size**

Unit	Average Household Size	Average Family Size
Douglas City	1.82	2.60
Saugatuck City	1.80	2.43
Saugatuck Township	2.31	2.86
Allegan County	2.63	3.08

Source: US Census, 2010



### Age

The age of the population is an important factor in identifying recreation needs. The following table provides a breakdown of various age categories for the study area and Allegan County as a whole. The information indicates:

- The percentage of school age residents (5-19) for the Project Area is significantly less than Allegan County as a whole; 17.3 percent and 22 percent, respectively.
- The percentage of residents 45 years and older is significantly greater for the Project Area than Allegan County as a whole; 59 percent and 42 percent, respectively.

#### Age Distribution - Number and Percent (Per Specified Unit)

Age	Douglas (1,232 pop.)	Saugatuck (925 pop.)	Saugatuck Twp. (2,944 pop.)	<b>Project Area (5,101 pop.)</b>	Allegan County (111,408 pop.)
0-4	45 (3.7%)	25(2.7%)	150 (5.1%)	220 (4.3%)	7,501 (6.7%)
5-19	147 (11.9%)	103(11.1%)	506 (17.3%)	756 (14.8%)	24,482 (22%)
20-24	24 (1.9%)	22 (2.4%)	90 (3.1%)	136 (2.7%)	5,816 (5.2%)
25-34	61 (4.9%)	68 (7.4%)	213 (7.2%)	342 (6.7%)	12,201 (10.9%)
35-44	123(10.0%)	98 (10.6%)	412 (14%)	633 (12.4%)	18,143 (17.2%)
45-54	234 (19.0%)	175 (18.9%)	576 (18.9%)	985 (19.3%)	18,121 (16.2%)
55-64	278(22.6.7%)	234 (25.3%)	535 (18.2%)	1,047(20.5%)	14,158 (12.7%)
65+	320(26%)	200 (21.6)	482(16.4%)	1,002(19.6%)	14,438 (13%)
Note: Percentages are rounded. Source: US Census, 2010					

### Gender and Race

The following table provides a breakdown of gender and race. While all units report a slightly higher percentage of males, the overall proportion of males to females is relatively even. The same holds true for Allegan County as a whole. The Saugatuck Township shows the greatest difference, albeit minor, with 51.1 percent male and 48.9 percent male.

The racial character of the project area, as well as Allegan County as a whole, indicates a population largely classified as “White”. While relatively small in absolute numbers the City of Saugatuck, as a percentage of its total population, is home to the greatest percentage of “Black” residents (0.6% percent) and “American Indian / Alaskan” residents (0.6% percent).



**Gender and Race Breakdowns**

Unit	2010 Gender		2010 Race					
	Male	Female	White	Black	Am. Indian/Alaskan	Asian	Native Hawaiian	Other
Douglas City	616 (50%)	616 (50%)	1,198 (97.2%)	7 (0.6%)	2 (0.2%)	3 (0.2%)	-	11 (0.9%)
Saugatuck City	467 (50.4%)	458 (49.5%)	884 (95.6%)	6 (0.6%)	6 (0.6%)	4 (0.4%)	-	8 (0.9%)
Saugatuck Township	1,505 (51.1%)	1,439 (48.9%)	2,824 (95.9%)	9 (0.3%)	16 (0.5%)	17 (0.4%)	-	39 (1.3%)
<b>Project Area</b>	<b>2,588 (50.7%)</b>	<b>2,513 (49.3%)</b>	<b>4,906 (96.2%)</b>	<b>25 (0.5%)</b>	<b>16 (0.5%)</b>	<b>24 (0.5%)</b>	<b>2 (-)</b>	<b>69 (1.3%)</b>
Allegan County	55,473 (49.8%)	55,935 (50.2%)	103,513 (92.9%)	1,358 (1.2%)	636 (0.6%)	648 (0.6%)	22 (-)	3,082 (2.8%)

*Note: Percentages are rounded. Source: US Census, 2010*

**Household Income**

The following table provides a breakdown of household income, including median household income and an income spread by select category. Compared to Allegan County as whole, the project area exhibits a slightly greater percentage of households with lower incomes.

Conversely, for households with incomes of \$100,000 and above, the project area reveals a significantly greater percentage of such households than does Allegan County.

It is important to note that each of the project area’s governmental units, as well as the public schools, have instituted a number of recreational facilities and programs which area either free or low cost to area residents.

**Household Income (2010 Census)**

Unit	Median HH Income	Less than \$15,000	\$15,000 to \$24,999	\$25,000 to \$49,999	\$50,000 to \$99,999	\$100,000 and above
Douglas City	\$41,042	68 (19.4%)	65 (18.6%)	74 (21.2%)	91(26%)	52(14.9%)
Saugatuck City	\$54,563	96 (23.7%)	17 (4.2%)	60 (14.9%)	187(46.2%)	96(23.7%)



Saugatuck Township	\$57,001	129 (10.6%)	79 (6.5%)	302 (24.8%)	430 (35.4%)	275 (22.%)
<b>Project Area</b>	----	<b>293 (14.5%)</b>	<b>161 (8%)</b>	<b>436 (21.5%)</b>	<b>708 (35%)</b>	<b>423 (21%)</b>
Allegan County	\$51,232	4,561 (10.8%)	4,356 (10.4%)	11,472 (27.3%)	15,356 (36.7%)	6,169 (14.7%)

**Poverty Level Families**

The following table provides detail on the number of families classified as poverty level status. As indicated, each unit possesses a slightly higher percent of poverty level status families than to Allegan County as a whole.

**Poverty Level Status- Families**

Unit	Families	Percent of Families
Douglas City	24	8.7
Saugatuck City	18	6.7
Saugatuck Township	51	5.4
Allegan County	1,437	5.0

Note: Percent reflects that percent of total families per unit.  
Source: US Census, 2010

**Special Needs Residents**

Special needs residents include, among others: the elderly; persons physically or mentally challenged; persons visually or hearing challenged; persons and/or families in poverty; and, other residents having special or unique needs. According to the 2000 U.S. Census, one out of every dozen U.S. children and teenagers has a physical or mental disability.

Based on contact with area health care, educational, social and other agency organizations, it is roughly estimated 2 to 5 percent of the area’s population experience some level of special need. To ensure that all populations are given opportunity to enjoy local recreational opportunities, the 2008 Recreation Plan provides:

- all new facilities will be designed to meet or exceed ADA requirements.
- examine existing park facilities to determine accessibility.
- future action programs will consider the needs of special populations. It is noted that past programs have done likewise.



- special needs residents will be enlisted to serve on future programming and planning activities.
- whenever possible, programs will be offered without charge to ensure that low income residents have the opportunity to participate. In the event charges/fees are necessary, allowances will be made to assist those in need. As possible, assistance will be accomplished in a confidential manner.

### Seasonal Population

A seasonal influx of cottage owners, visitors, and boaters is estimated to virtually double the permanent population of the recreational area in the summer season. Fall and Spring see more of the part time residents too. While it is difficult to be precise on the seasonal population, the next table offers insight into the magnitude of the increase during spring, summer, and fall. Note that these figures are only for people who are residents part of the year. Day visitors on summer weekends are estimated to add another 4,000 or more to the population. The Saugatuck Douglas area has 507 transient rooms available for overnight guests.

#### Seasonal Population

Community	1990	2000	% Change 1990-2000	Total Housing Units 2000	Seasonal % of Total 2000
Douglas City	184	217	18%	853	25.4%
Saugatuck City	287	319	11%	928	34.4%
Saugatuck Township	180	197	9%	1,236	15.9%
<b>Tri-Community Area</b>	<b>651</b>	<b>733</b>	<b>13%</b>	<b>3,017</b>	<b>24.3%</b>
Allegan County	2,730	3,154	16%	43,292	7.3%

Source: U.S. Census, 2010

#### Estimated Seasonal Residents

Dwelling Type	Number of Units	Population/Unit	Total Population
Seasonal Homes	733	2 (2)	1,466
Large Boats	498	2	996
Campground Sites	223	4	488 (3)





Church Camp Users	162	1	162
Overnight Lodging	507	2	1,014
			<b>4,126</b>
Notes:			
1) U.S. Census, 2010			
2) Based on the average persons per household of the project area as secured from the US Census, 2010			
3) Based on an average 55% campsite occupancy rate.			

**Visitor Profile**

The City of Saugatuck completed a strategic plan for purposes of future growth and development. Part of that effort involved an examination of local tourism. The following was secured from the plan. It provides useful information considered applicable to all of the neighboring project area communities when considering economic and recreational impacts on the area.

- State of Residence - Michigan (42%), Illinois (30%), Indiana (11%), and Ohio (12%)
- Income - 38% had incomes of \$100,000 or greater.
- Children - 22% of those visiting brought children.
- Lodging - Bed and Breakfast (70%), hotel/motel (25%), and cottage or RV park (5%)
- Activities - beach (40%), dune rides (12%), and boating (11%)
- Spending Patterns - \$500 to \$599 (median range), 15% spend +\$1,000
- Likes - Shops (39%), water (19%), restaurants (16%), and beaches/scenic beauty (13% each)
- Dislikes - Parking (22%), traffic (5%), and early closing of shops (5%).

**Employment**

The following table provides a breakdown of employment for the project area. For comparative purposes, the percentage of employment for Allegan County as a whole is also shown. Indicative of the project areas tourism base, employment in the categories of retail trade; real estate; and arts, entertainment, lodging, and food exceed the county’s overall percentages for similar employment.

**Employment by Industry - Project Area Units of Government**

Category	Number	Project Area Percent of Total Area	Allegan County Percent of Total County
Farm/Ag/Forestry/Fisheries	12	0.3	2.9
Construction	174	5.6	7.3



Manufacturing	831	26.7	32.6
Wholesale Trade	68	2.2	4.1
Retail Trade	468	15.1	11.0
Transportation and Public Utilities	131	4.2	4.1
Information	56	1.8	1.2
<b>Employment by Industry Continued:</b>			
Finance/Insurance/Real Estate	242	7.8	3.7
Prof/Scientific/Admin/Man.	217	6.9	5.2
Educ/Health/Social Services	350	11.3	15.4
Arts/Ent/Rec/Lodging/Food Services	345	11.1	6.0
Other Services (except Admin)	160	5.1	4.2
Public Administration	54	1.7	2.0
Note: Percentages are rounded. Source: US Census, 2010			

The following table offers a breakdown of employment by occupation. Occupational percentages are also provided for Allegan County as a whole. It should be noted that employment statistics for seasonal residents are not included in these figures. Additionally, many residents of the area may be retirees.

**Employment by Occupation - Project Area Units of Government**

Occupation	Number	Project Area Percent of Total Area	Allegan County Percent of Total County
Management/Prof. Related	897	28	24.0
Services	457	14.7	13.2



Sales/Office	813	26.2	22.1
Farm/Fish/Forestry	4	0.1	1.7
Construction/Extraction	266	8.6	11.3
Production/Transportation	671	21.6	27.7
Note: Percentages are rounded. Source: US Census, 2010			

### SUMMARY POINTS

- The area’s population is expected to grow steadily in the decade of 2000-2020 with growth pushing out from Ottawa County and an influx of residents from other larger metropolitan areas.
- Non-family households make up a large portion of the area’s households and should be considered in recreation programming.
- Household sizes in the study area are considerably smaller than for the county overall.
- The number of school-aged children in the study area is significantly less than the county average while the number of “empty-nester” households (persons over 45) is significantly higher than the county. This does not mean children are not an active part of these households as perhaps grandchildren visit the area. This notion is reinforced by the City of Saugatuck’s study which reflected 22% of the area’s visitors brought children with them.
- The range of difference between the areas most modest and most wealthy households is greater than found in the county overall.
- During the summer, the population nearly triples with visitors and seasonal residents. This is an important part of the area’s economy which is reinforced by the fact that retail trade and real estate sectors provide more employment in the area than for the county overall.
- It is estimated that over half of the area’s seasonal visitors are from outside of Michigan.



## ENVIRONMENTAL CHARACTERISTICS

The Saugatuck Douglas area has many environmental characteristics which make it uniquely suited to a variety of recreational pursuits. In addition to being adjacent to a great lake, there is an abundance of inland water recreational opportunities framed by sand dunes and woodlands.

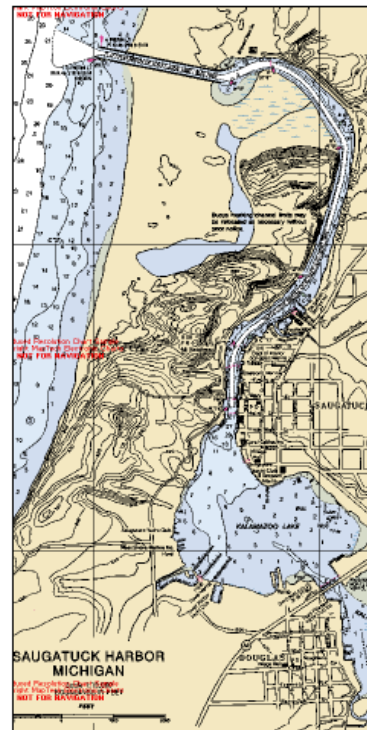


### Water Resources

Among the most unique environmental attributes of the study area are its lakes, rivers, ponds, and streams which are interconnected with Lake Michigan. These resources provide a location for a variety of outdoor activities including boating, fishing, swimming, wildlife observation, nature study, camping, hiking, cross country skiing and nature walks. Lake Michigan forms the western boundary of Saugatuck Township, Saugatuck, and Douglas. The Kalamazoo River meanders through the central and northwestern portions of the township and creates the inviting waterfronts of Saugatuck and Douglas. The river widens to form Kalamazoo Lake, a center of boating activity between Saugatuck and Douglas. Additional bodies of water include Ox-Bow Lagoon in the northwestern corner of the township, Goshorn Lake on the northern boundary and Silver Lake in the central part of the township. An extensive marsh is located in the central part of the township along the Kalamazoo River. Numerous ponds and small streams are found throughout the study area.



Saugatuck Harbor Chart



Source: NOAA





### Topography

Most of the tri-community area is relatively flat, but local variations in elevation of up to 150 feet exist between uplands and the flood plain of the Kalamazoo River. There are also considerable local differences in elevation in the extreme northwest portions of the Township in the sand dunes between the Kalamazoo River and Lake Michigan. The highest point in this area is Mount Baldhead which rises 310 feet above Lake Michigan. Special features of the area include the Lake Michigan shoreline and beaches, the sand dune area, Kalamazoo River, woodlands, and abundant green space. Areas of abrupt local variations in elevation appear as dark areas on the topographic map following on page 24.



### Climate

Weather conditions play an important role in the Saugatuck Douglas area. This area is reliant on the recreational opportunities for both residents and tourist alike. Lake-effect weather does affect the community's economic base. Variations in average conditions, especially during the spring, summer, and fall months can cause fluctuations in tourism and outdoor recreation activities. The perfect summer weather is temperatures ranging from warm to very warm with cool nights. Rain plays havoc with outdoor recreation, but adds to the shopper's recreation. The winter months offer many opportunities for recreational activities such as cross country skiing, sledding, and other winter sports.

### Soils

Much of the study area contains poorly drained soils including the Newton-Granby Association and the Nappanee-Blount-Rimer Association. Drainage occurs via creeks, including Peach Orchard Creek, Tannery Creek, Silver Creek and Moore's Creek, all of which flow into the Kalamazoo River and many of which are floodplain areas that can offer recreational amenities. A network of county drains facilitates movement of water from flat areas in the southern half of the township. Well-drained soils are found in the northwestern corner of the study area and northwestern and southwestern corners. In the study area, bedrock of the Michigan Basin is overlain by 50 to 400 feet of glacial deposit. This gives our beaches a wide variety of beach stones.

The sand dunes along Lake Michigan in the northwest corner of the township form a unique, fragile geological formation and ecosystem that is susceptible to erosion by wind and water, and subject to destruction from careless use or development. The sand dunes are also a key component of the area's character and charm.



### Fish and Wildlife

Although much of the area has been altered due to urbanization and human settlement, there are areas of forested acreage and unique dune ecosystems. In addition there are several types of wetlands and aquatic systems in the study area. The fish stocks range from salmon and walleye in Lake Michigan and the Kalamazoo River to smaller sunfish, bluegill, and other types of pan fish in the inland waters. Also included in the aquatic life are small crustaceans and mollusks. An abundance of waterfowl finds this area attractive for breeding and feeding. It is also located on the Lake Michigan Flyway for migrating ducks, geese and swans. Whitetail deer, opossum, raccoon, squirrels and other small mammals are common to the area. Even in the more urbanized areas of the study area wildlife is found due to the wooded corridors and parks found throughout the region. Songbirds are found throughout the study area. The forested areas, dune areas, and open fields all are home to many species of song birds. Because dune, floodplain, wetland and lake ecosystems are in close proximity to one another, the diversity of wildlife viewing and nature study opportunities in the area are fantastic, especially considering they are tucked amongst highly populated areas.



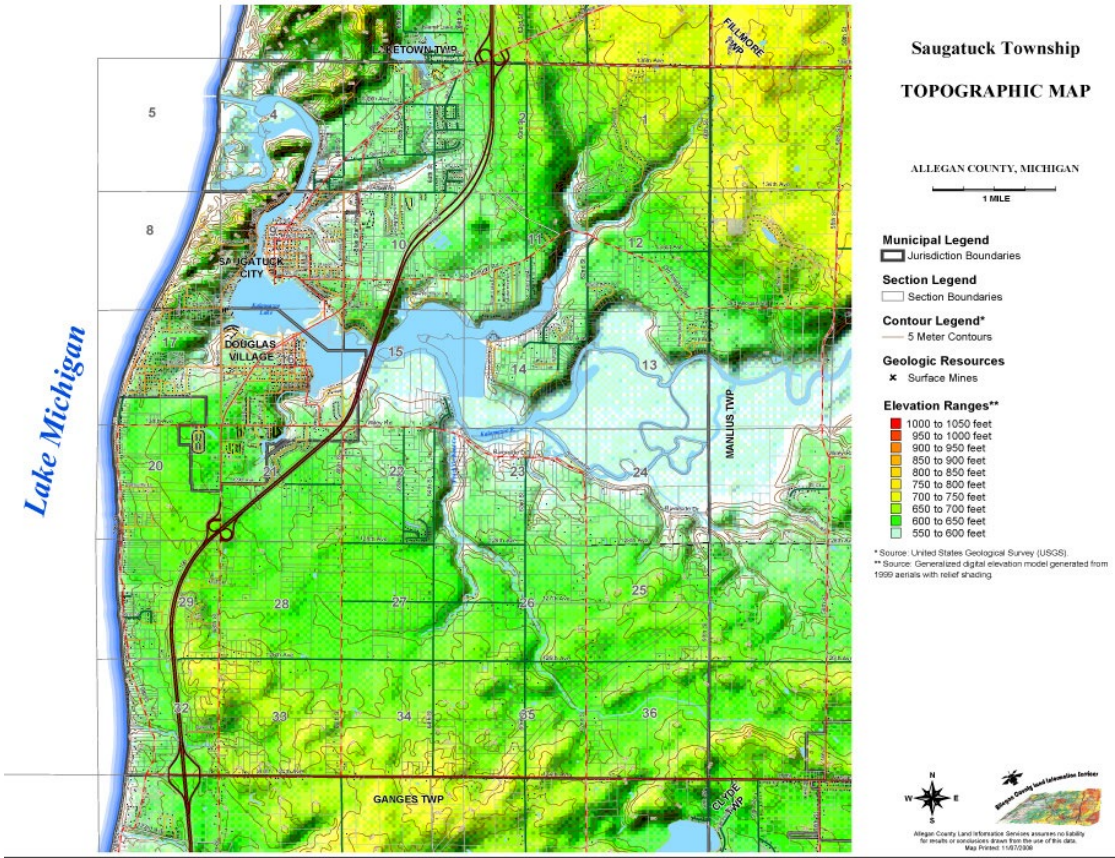
### Summary Points

- The area’s unique setting along the Lake Michigan shoreline with a major lake, wetland and river system inland makes it a perfect setting for a variety of environmentally based recreational opportunities.
- Water dominates the landscape, local views and is a center for recreational activities.
- Natural features harbor wildlife and natural study opportunities.
- Sand dunes and woodlands frame the community and provide a backdrop for additional recreational activity.
- The area is also home to fragile ecosystems such as sand dunes and protected species.



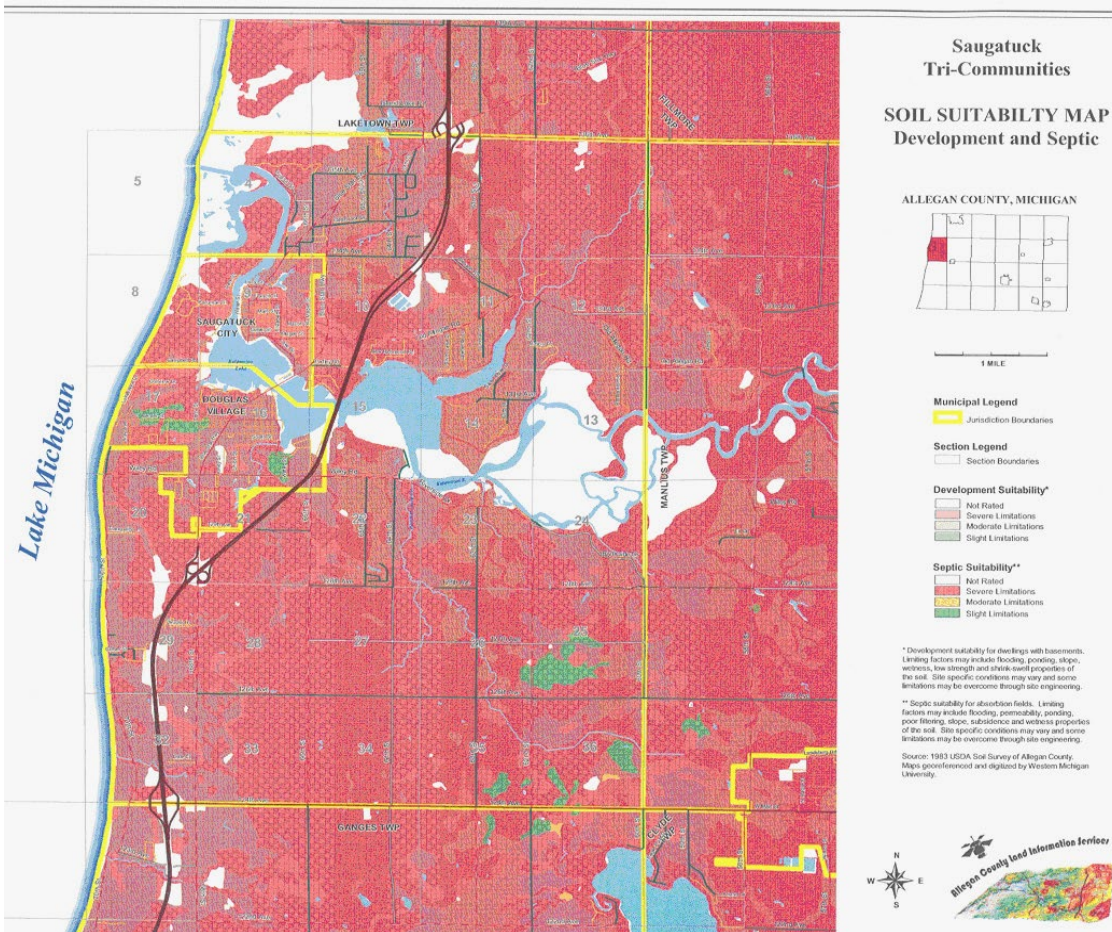


### Tri-Community Topographic Map





### Tri-Community Soil Suitability Map Development and Septic







## EXISTING LAND USE

### Residential Land Use

Residential land use in the study area is concentrated in Saugatuck and Douglas and along the Lake Michigan shoreline. In the rest of the area, residential development is scattered along section line roads and overlooking the Kalamazoo River. Many of the homes along Lake Michigan or the Kalamazoo River are cottages or seasonal homes. There are two mobile home parks in Saugatuck Township and two in Douglas. Approximately 2,812 acres of the available land is in residential use.

### Commercial Land Use

Commercial development is centered in Saugatuck, Douglas, and along the Blue Star Highway. Many of the commercial establishments serve the needs of a large tourist community in the summer and a growing year-round economy. Approximately 196 acres of land is in commercial use.

### Industrial Land Use

Industrial land use is limited largely to an area south of downtown Douglas extending to the Exit 36 interchange of Interstate 196. Less than 1% of the total land area is devoted to industrial uses. Office furniture manufacturing and food processing are the two major industrial land uses in the area. There are also several small machine shops. There are about eight industrial facilities providing about 490 jobs. Many additional jobs are available during the tourist seasons.

### Agricultural Land Use

Agriculture is another important part of the area's economic base. A major portion of the land (57%) in the study area can be classified as agricultural or vacant. The size of farms in Saugatuck Township ranges from over 300 acres to under 10 acres. Agriculture includes orchards of apples, peaches, apricots, and cherries. Some of the less well-drained areas are used for blueberry plantations. Prime farmland is generally concentrated in the south central part of the Township. Corn, wheat, and soybeans are other crops. A few farms are livestock, including horses, hogs, and cattle.

### Zoning and Future Land Use

A review of local land use policies and programs of the City of Saugatuck, the City of the Village of Douglas and Saugatuck Township reveals that the three jurisdictions have closely followed the existing zoning ordinances and Tri-Community Comprehensive Master Plan. In particular is the dune protection area along Lake Michigan.



Public and semi-public uses such as schools and parkland are programmed in locations that support the residents of the area. Heavy use areas along Lake Michigan and in other tourist gathering points receive particular attention because they serve a concentrated year-round population in addition to a large seasonal population. A balance is sought for recreational uses for a wide variety of users while protecting the area's natural resources.

### **Transportation Systems**

The City of Saugatuck and the City of the Village of Douglas have a well defined urban grid pattern of streets which is common to mature urban areas. Saugatuck Township's street pattern is more rural in nature but blends well with the City of Saugatuck and the City of the Village of Douglas. The City of Saugatuck offers shuttle bus service for residents and tourist during the summer. Cars park on the outskirts of town, thus reducing traffic, and the need for more in town parking, and people are transported by bus to the downtown area or the beach area.

Sidewalks are found throughout the City of Saugatuck and the City of the Village of Douglas. As new development occurs, or with the reconstruction of area streets, sidewalk connections examined for placement to connect area paths and walking routes. It is very important to the area that all densely populated areas, or other areas heavily used by pedestrians, possess adequate sidewalks or non-motorized pathways for purposes of advancing public safety. There are currently 2 non-motorized pathways in the area. One connects the City of Saugatuck to the City of the Village of Douglas and the other connects the City of Saugatuck to Laketown Township and Holland to the North.

Public transportation is available through the services of the Interurban, a bus service provided to the communities through tax milages.

Interstate US 31 traverses the area running north and south. This is the main route for north/south traffic on the western part of the state. Air and bus service is available in either Muskegon or Grand Rapids. Rail Service (e.g. passenger service), via Amtrak, is available in Grand Rapids, Holland, and Kalamazoo.

Commercial charter boat service and boats for hire are available in both the City of Saugatuck and the City of the Village of Douglas. There are several marinas and private boating facilities in Kalamazoo Lake which connects to Lake Michigan. Private boats from around the Great Lakes visit the port of call.

The relatively new pastime of cruising the Great Lakes has made an impact with cruise ships making frequent stops. The waterways are looked at as an asset and life blood of this region. Many forms recreational opportunities are connected to the water in some way.



### PARKS AND RECREATION INVENTORY

In addition to a rich base of natural amenities, the tri-community has many formal recreational facilities which offer opportunities for organized play, active individual recreation and passive recreation. The inventories herein review area recreational assets for planning purposes. The parks have also been evaluated for accessibility with respect to individuals with mobility challenges. A rating of “1” means that none of the facilities in the park meet ADA accessibility standards. A rating of “5” meant the entire park was developed or renovated using the principals of universal design.



Parks are defined as any public land devoted to recreational use. There are more than 334 acres of public land in the tri-community area. It is recognized that the cumulative worth of individual community assets has an important regional function as well as a tourism function.

### PARKS AND RECREATION FACILITY INVENTORY

#### City of the Village of Douglas

PARK	SIZE/AMENITIES/ACCESSIBILITY
Douglas Beach	<ul style="list-style-type: none"><li>• 1.5 acre site</li><li>• Lake Michigan public access via stairwell</li><li>• Restrooms/barbeque grills/drinking fountain</li><li>• Parking along Lake Shore Drive</li><li>• Accessibility = 1</li></ul>
Harold Beery Field	<ul style="list-style-type: none"><li>• 1.2 acres on main street of Douglas</li><li>• Softball diamond with bleachers/storage building/ restrooms/floodlights</li><li>• Children’s playground</li><li>• Used for youth baseball/ football practice/youth softball</li><li>• Accessibility= 2</li></ul>



Howard C. Schultz Park	<ul style="list-style-type: none"><li>• 20.0 acre site on the Kalamazoo River</li><li>• Boat launch ramp/parking/fishing sites</li><li>• Soccer field/baseball diamond</li><li>• Picnic pavilion/restrooms/barbeque grills</li><li>• Children’s playground/nature trails</li><li>• Adult softball and youth baseball/softball</li><li>• Adult/youth soccer</li><li>• Accessibility= 2</li></ul>
Union Street Launching Site	<ul style="list-style-type: none"><li>• Narrow strip of land off of Blue Star Highway providing boat access to the Kalamazoo River, with limited parking</li><li>• Accessibility = 1</li></ul>
Wade’s Bayou Memorial Park	<ul style="list-style-type: none"><li>• 1.8 acres</li><li>• Gazebo overlook and picnic tables</li><li>• Bathrooms</li><li>• Dock</li><li>• Kayak launch</li><li>• Park benches</li><li>• Accessibility= 2</li></ul>
Alice McClay Park	<ul style="list-style-type: none"><li>• Less than 1 acre</li><li>• Open space</li><li>• Nature viewing</li><li>• Picnic tables</li><li>• Fishing</li><li>• Accessibility = 1</li></ul>
Veterans Walk Park	<ul style="list-style-type: none"><li>• Less than 1 acre</li><li>• Public access to riverfront boardwalk</li><li>• Ample Parking</li><li>• Fishing</li><li>• Accessibility = 2</li></ul>
Tannery Creek Outlook	<ul style="list-style-type: none"><li>• Less than 1 acre</li><li>• East side of Water Street at South Street</li><li>• Scenic overlook - wetlands and river</li><li>• Accessibility= 1</li></ul>



**CITY OF SAUGATUCK**

PARK	SIZE/AMENITIES/ACCESSIBILITY
The Village Square	<ul style="list-style-type: none"><li>• 2.5 acre centrally located park</li><li>• Children’s playground</li><li>• Tennis courts/basketball court</li><li>• Park benches and statuary art</li><li>• Restrooms/drinking fountain</li><li>• Site of Memorial Day/Veterans Day festivities</li><li>• Accessibility= 3</li></ul>
Frank Wicks Park	<ul style="list-style-type: none"><li>• 0.5 acres along Kalamazoo River</li><li>• Bandstand/concrete river walk/fishing access</li><li>• Park benches and restrooms</li><li>• Accessibility= 3</li></ul>
Willow Park	<ul style="list-style-type: none"><li>• 132 feet of frontage on the Kalamazoo River</li><li>• Elevated wooden boardwalk with benches</li><li>• Accessibility= 2</li></ul>
Cook Park	<ul style="list-style-type: none"><li>• 1 acre green space with overlook to Kalamazoo River</li><li>• Used for art fairs/watercraft and fireworks viewing</li><li>• Lake frontage leased from city - used for boat mooring by yacht club</li><li>• Accessibility = 2</li></ul>
Spear Street Boat Ramp	<ul style="list-style-type: none"><li>• 66' launch site (street end) on Kalamazoo River</li><li>• Metal grated docks</li><li>• On street parking for trailers/vehicles</li><li>• Accessibility= 1</li></ul>



Mt. Baldhead Park	<ul style="list-style-type: none"><li>• 100 acre site on west bank of Kalamazoo River</li><li>• Picnic Pavilion and tables</li><li>• Restrooms</li><li>• Accessible viewing dock for fishing</li><li>• Hiking trails</li><li>• Wooden stairs to observation deck on top of Mt. Baldhead dune (highest dune in the area) with views of Kalamazoo River valley (to east) and Lake Michigan (to west)</li><li>• Saugatuck Douglas Historical Museum</li><li>• Accessibility= 2</li></ul>
Oval Beach	<ul style="list-style-type: none"><li>• 50 acre park adjacent to Mt. Baldhead on the west</li><li>• Public Access to Lake Michigan</li><li>• Natural Trails</li><li>• Beach house/concession stand</li><li>• Restrooms/changing rooms</li><li>• Large parking area/barbeque grills</li><li>• Beach/hiking trails</li><li>• Wheelchair accessible to beach (donated by Lions Club)</li><li>• Accessibility= 2</li></ul>
Coghlin Park	<ul style="list-style-type: none"><li>• 0.5 acres with 200' Kalamazoo River frontage</li><li>• Park benches along perimeter of park</li><li>• Fishing access</li><li>• Gazebo</li><li>• Accessibility= 2</li></ul>
Peterson Preserve	<ul style="list-style-type: none"><li>• 9 acres of marsh/wetlands</li><li>• Wildlife sanctuary/ Natural area</li><li>• Accessibility= 1</li></ul>



Interurban Trail	<ul style="list-style-type: none"><li>• 0.35 acre naturally cleared footpath from the Peterson Nature Preserve</li><li>• Located on former train track right-of-way</li><li>• Accessibility= 1</li></ul>
Old Saugatuck Airport	<ul style="list-style-type: none"><li>• 154 acres of woods/fields in Saugatuck Township</li><li>• No public facilities/used for forestry management</li><li>• 1 acre non-wooded area with small clubhouse</li><li>• Accessibility= 1</li></ul>
Tallmadge Woods	<ul style="list-style-type: none"><li>• 100 acre wooded site, west of Kalamazoo River in Saugatuck Township</li><li>• Site of Oxbow Summer School of Art</li><li>• Deed restricted pursuant to use by City</li><li>• Accessibility= 1</li></ul>
Mize Rose Garden	<ul style="list-style-type: none"><li>• Small urban park in downtown Saugatuck</li><li>• Mature rose garden with areas for art display</li><li>• Brick pavers throughout</li><li>• Accessibility= 2</li></ul>
Saugatuck Harbor Natural Area	<ul style="list-style-type: none"><li>• Saugatuck</li><li>• Mature rose garden with areas</li><li>•</li></ul>



**SAUGATUCK TOWNSHIP**

PARK	SIZE/AMENITIES/ACCESSIBILITY
River Bluff Park	<ul style="list-style-type: none"><li>• 27 acre wooded tract with 0.5 miles Kalamazoo Frontage</li><li>• Adequate way finding system from Blue Star Highway</li><li>• Picnic area/children’s playground</li><li>• Paved parking lot</li><li>• Boat landing with picnic shelter</li><li>• Wood chipped trail to river overlook</li><li>• Public interpretation center</li><li>• Accessibility= 2</li><li>• .4 mile of kept nature trails including two foot bridges leading from “wood chipped trail to river overlook” to the “boat landing to with picnic shelter.”</li><li>• Historical marker at entrance of park</li><li>• Barbeque grills and picnic tables</li></ul>
Sundown Park	<ul style="list-style-type: none"><li>• 9,900 square foot parcel with overlook to Lake Michigan</li><li>• No beach access</li><li>• Street end of 126<sup>th</sup> Ave.</li><li>• Park bench</li><li>• Directional signs on M-89 and Lakeshore Dr</li><li>• Accessibility=2</li></ul>





134 <sup>th</sup> Street acreage surrounding Tails & Trails Dog Park.	<ul style="list-style-type: none"><li>• 39.45 acre site</li><li>• 5 acre fenced dog park</li><li>• Adequate way finding system to park</li><li>• Gravel parking lot</li><li>• Gazebo and picnic tables</li><li>• Dog-friendly</li><li>• Kept, walking trails for leashed dogs with gated entrances around enclosures.</li><li>• 1 gazebo and in large dog enclosure and 1 gazebo in small dog enclosure</li><li>• Water access</li><li>• Accessibility= 1</li></ul>
63 <sup>rd</sup> Street Public Boat Access	<ul style="list-style-type: none"><li>• Public launch site south side of Kalamazoo River</li><li>• Outhouse</li><li>• Owned and operated by DNR</li><li>• Sand parking/picnic facilities</li><li>• Accessibility= 1</li></ul>
Blue Star Memorial Highway Park	<ul style="list-style-type: none"><li>• Picnic shelter and barbeque grill</li><li>• Owned by the Allegan County Road Commission/maintained by Saugatuck Township</li><li>• Small area for off-street parking</li><li>• Accessibility= 2</li></ul>
Amalanchier Park	<ul style="list-style-type: none"><li>• 4 acre wooded site, north of North Street, with access to Moore’s Creek via a nature trail</li><li>• Accessibility=2</li></ul>



**SAUGATUCK PUBLIC SCHOOLS**

PARK	SIZE/AMENITIES/ACCESSIBILITY
Douglas Elementary School	<ul style="list-style-type: none"><li>• School and 8.6 acre play field, located on Randolph Street</li><li>• Play field/Kidstuff Park II/outdoor restrooms</li><li>• Drinking fountain/picnic facilities</li><li>• High school baseball field</li><li>• Basketball Court</li><li>• Indoor gymnasium available for school and public use and leisure time activities, programming offered by the Community Recreation Program</li><li>• Facility is owned by the Saugatuck Public Schools</li><li>• Utilized by community organizations/governmental groups/residential meetings/Public Schools Community Recreation Programs</li><li>• Accessibility=2</li></ul>
Saugatuck High School	<ul style="list-style-type: none"><li>• 12.7 acre site on Elizabeth Street</li><li>• Lighted football field/track, tennis courts and softball field</li><li>• Performing arts center</li><li>• 2 indoor gymnasiums/locker rooms/indoor concessions</li><li>• Indoor recreation programs include volleyball/basketball/tennis/weight training/ batting cages/pitching machines</li><li>• Utilized by parent and community groups/City of Saugatuck and Saugatuck Township governmental meetings/Saugatuck Masonic Lodge/ Public Schools Community Recreation Programs</li><li>• Accessibility= 3</li></ul>



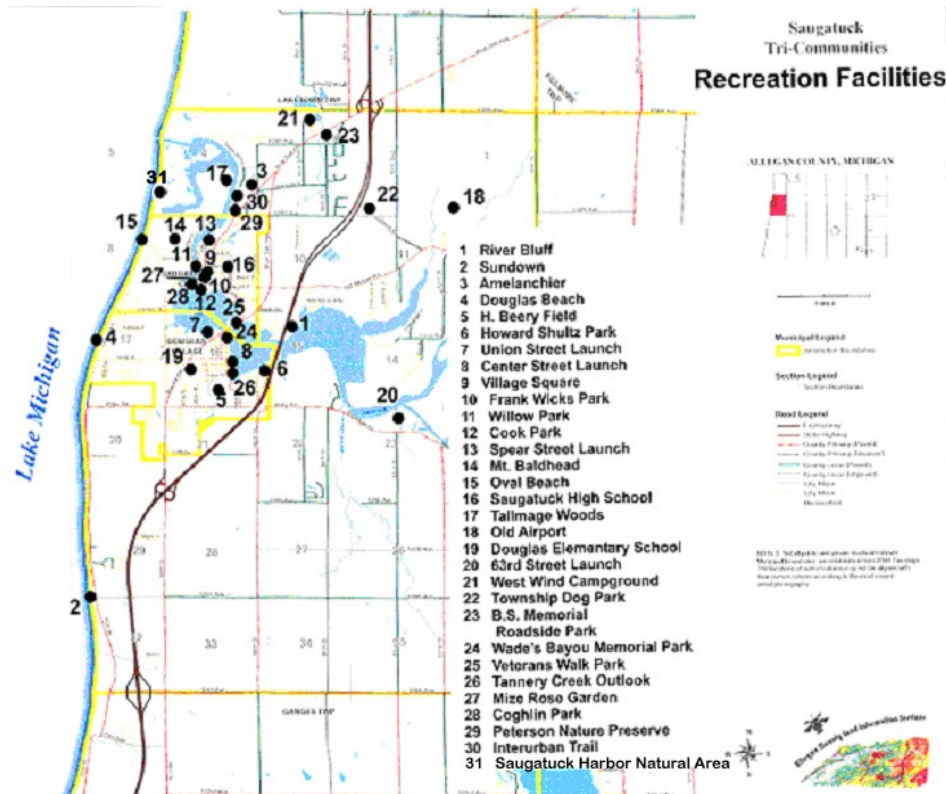
Saugatuck Douglas Area Parks & Recreation Plan

	Acreage	Play	Ball Diamond	Soccer Field	Tennis Court	Football Field	Skating	Basketball Court	Volleyball	Swimming Area	Boat Launch	Parking Area	Pathway	Picnic Area/Shell	Water Access	Nature	Bathrooms	Other
<b>Mini-Parks</b>																		
Douglas Beach	1.5									X		X			X		X	
Frank Wicks Park	0.5														X		X	X
Willow Park	0.2													X	X			
Cook Park	1													X				X
Coghlin Park	0.5													X	X			
Mize Rose Garden	<1																	X
Sundown Park	0.4	X										X		X				
Veteran's Walk Park	<1																	X
Alice McClay Park	1															X		
<b>Neighborhood Park</b>																		
Harold Beery Field	2.7	X	X				X	X				X		X			X	X
Wade's Bayou Memorial Park	1.8											X		X	X			
Saugatuck Village Square	2.5	X			X		X	X									X	
<b>Community Park</b>																		
Howard C. Schultz Park	20	X	X	X							X	X		X	X	X	X	
Oval Beach	50									X		X	X	X	X	X	X	
River Bluff Park	27	X										X	X	X	X	X		
Tails & Trails Dog Park	5											X	X	X				X
<b>Large Urban Park</b>																		
Mt. Baldhead Park	100											X	X	X	X	X	X	X





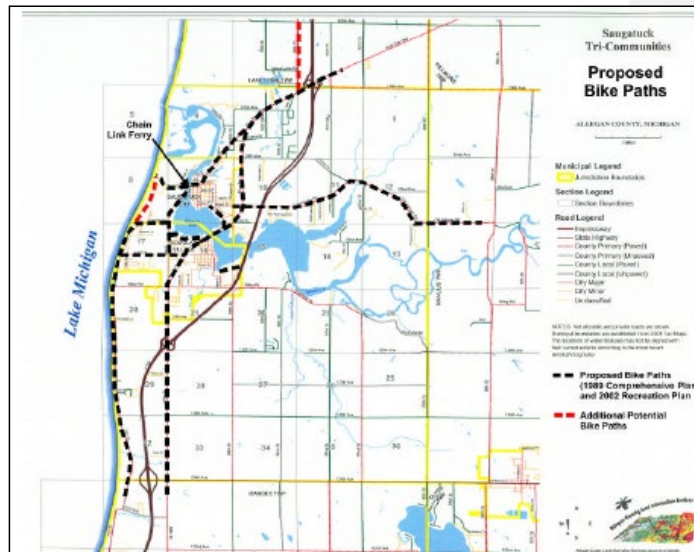
Tri-Community Recreation Facilities Map





### SYSTEM OVERVIEW

In general, the tri-community has a good mix of active and passive recreational facilities including play fields, park open spaces, trails and picnic areas. Maintenance and upgrading of existing park facilities needs to be continued. Fishing access could be improved somewhat with barrier-free fishing piers and more prominent shore access points. Waterfront access continues to be a community concern as a growing population and high tourist visitation rates can strain current facilities. Several marinas and road ends provide formal and informal access to the water, some of which is limited to visual access.



In both the 2008 Plan and during the update process for this plan, citizens were very interested in the development of an interconnected trail system throughout the community. Bike paths have been proposed throughout the area; and walking trails which are separated from vehicular trails are also of great importance. There is opportunity to develop more extensive trails connecting public facilities to natural areas via a formal trail network.

Accessibility is of concern in many local parks. Persons with mobility challenges, particularly those in wheel chairs, would find it difficult to access the facilities in many local parks. During peak tourist season, parking and vehicular access to in-town facilities can also be a challenge.

The tri-community area offers a wide variety of recreation programming including soccer, baseball, football, cheerleading, T-ball, softball, swimming, tennis, basketball, volleyball. Some non-athletic programs are also offered including hiking club, Labor Day bridge walk, art classes, exercise classes, martial arts and ski club. The 5 year recreation millage renewal passed in the 2013 May Election and participation in many programs grew significantly between 2002 and 2013 which indicates a high level of support for current programming. There has also been some interest expressed in more programming directed toward creative ability rather than physical ability (e.g., computers and art or music).

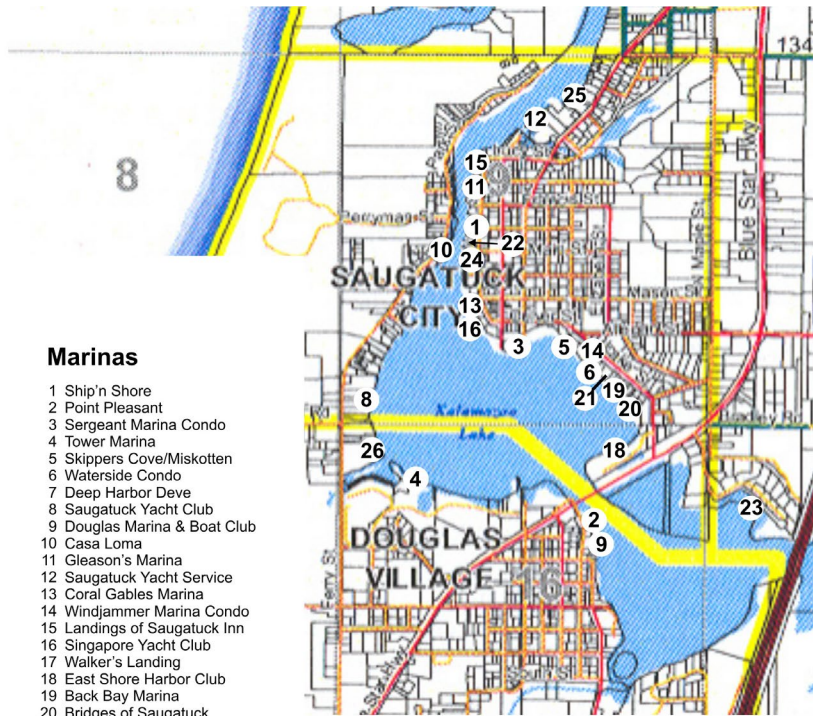


In both the 2008 plan and this update, the community has expressed a desire for more pool and fitness facilities. More programs for senior citizens, young adults and families are also desired. Additional beach and riverfront access were also somewhat of a concern (see updated input instruments in appendices). Following is an inventory of access points to the water.

Specific recreational upgrades are outlined by individual capital improvement programs presented later in this document.

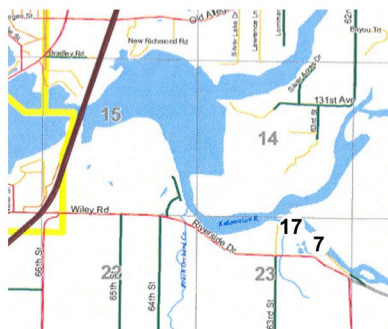


Tri-Community Marina Map



Marinas

- 1 Ship'n Shore
- 2 Point Pleasant
- 3 Sergeant Marina Condo
- 4 Tower Marina
- 5 Skippers Cove/Miskotten
- 6 Waterside Condo
- 7 Deep Harbor Deve
- 8 Saugatuck Yacht Club
- 9 Douglas Marina & Boat Club
- 10 Casa Loma
- 11 Gleason's Marina
- 12 Saugatuck Yacht Service
- 13 Coral Gables Marina
- 14 Windjammer Marina Condo
- 15 Landings of Saugatuck Inn
- 16 Singapore Yacht Club
- 17 Walker's Landing
- 18 East Shore Harbor Club
- 19 Back Bay Marina
- 20 Bridges of Saugatuck
- 21 Saugatuck Shores Condo
- 22 Main Street Docks - City of Saugatuck
- 23 Heron Bay Condo
- 24 Dockside Marketplace
- 25 Riverview Marina
- 26 Tower Harbor Marina Condo







## PARKS AND RECREATION PROGRAMS

Recreational programs are handled by the various governmental units and other agencies and organizations. Following are the primary programs:

□ Current Saugatuck Public Schools Community Recreation Programs include the following:

- Youth Soccer Leagues U-6
- Youth Soccer Leagues U-8
- Youth Soccer Leagues U-10
- Youth Soccer Leagues U-12
- Youth Soccer Leagues U-14
- Start Smart Soccer
- Youth Baseball Boys Minors
- Youth Baseball Boys Majors
- Youth Baseball Boys Juniors
- Youth Baseball Boys Seniors
- Youth Softball Girls Minors
- Youth Softball Girls Majors
- Youth Softball Girls Juniors
- Youth Softball Girls Seniors
- Start Smart Baseball
- Youth T-Ball
- Men's Adult Softball Leagues
- Coed Adult Softball Leagues
- Youth Football League Grades 3&4
- Youth Football League Grades 5&6
- Flag Football League Grade K-2
- Summer Swimming Lessons Level 1
- Summer Swimming Lessons Level 2
- Summer Swimming Lessons Level 3
- Summer Swimming Lessons Level 4
- Youth Tennis Lessons
- Adult Tennis Lessons
- Start Smart Multi Sport Program
- Youth Basketball Leagues Grades K&1
- Youth Basketball Leagues Grade 2





- Girls Basketball League Grades 3&4
- Girls Basketball Grades 5&6
- Girls Basketball League Grades 7&8
- Boys Basketball League Grades 3&4
- Boys Basketball League Grades 5&6
- Boys Basketball League Grades 7&8
- Adult Basketball Leagues
- Adult Volleyball Leagues
- Youth Volleyball Clinic
- Volleyball League Grades 5&6
- Youth Cheerleading
- Youth Track Camp
- Baseball Skills Camp
- Softball Skills Camp
- Rocket Football Mini Camp
- Youth Archery
- Martial Arts – Sanchin Ryu Instruction
- Ski Club
- Senior Hiking Club
- Senior Tennis
- Adult Golf Lessons
- Youth Golf Lessons
- Sailing Classes
- Blue Star Bridge Walk
- Boater Safety Class
- Educational Classes – French, Art, Cooking, Jewelry Creation etc.
- Fitness Classes – Yoga/Pilates
- Fitness Classes – Swiss Ball Training / Riptide Fitness
- Fitness Classes – Open weight room & gym





Saugatuck Public Schools Community Recreation has a high percentage of participation within the school system. In a study done in 2006 to apply for Blue Ribbon School Status it showed that 87% of the entire student body at Douglas Elementary School has participated in at least one Community Recreation Activity in the last two years. It also showed that there are estimated 1,750 total participants annually.

<b>Sample of Programs</b>	<b>Participant # 2002</b>	<b>Participant # 2013</b>
Baseball & Softball	218	244
K-2 Basketball	29	43
Saturday Morning Basketball	65	120
Fall Soccer	102	108
Rocket Football	36	51
Cheerleading	0	30
Tennis Lessons	9	22
Swimming Lessons	93	58 (summer only)
Ski Club	30	108
<b>TOTAL</b>	<b>582</b>	<b>784</b>



**CIVIC & CULTURAL**

In addition to the facilities and formal recreation programs offered by schools and government, several local groups provide additional services to the community. Summer Theater, the yacht club, various art and garden clubs, scouting groups and area churches offer limited programming and gathering places for residents. The District Library, Historical Society, Rotary Club Saugatuck-Douglas, Women’s Club and Saugatuck Center for the Arts are important community fixtures. Several festivals and events are also hosted by the community including “Taste of Saugatuck,” “Taste of Douglas,” art fairs, winter festival, Oxbow School of the Arts and biweekly summer Douglas socials. The Saugatuck/Douglas Historical Society also curate a local history museum (see points of interest map following on page 44).

Noteworthy as a part of the community’s resources are historical and archaeological reminders of the area’s history. They include:

Name	Year Initiated	Comments
Singapore	1830’s - 1870’s	<ul style="list-style-type: none"><li>• Northwest bend of the Kalamazoo River</li><li>• Former lumbering town/now ghost town</li><li>• Buildings engulfed by the Lake MI shoreline</li><li>• Privately owned/State Register of Historic Places</li></ul>
Saugatuck Village Hall	1880	<ul style="list-style-type: none"><li>• White frame building with columns</li><li>• Former fire hall/ now city hall</li><li>• State Register of Historic Places</li><li>• Council chambers on second floor with local paintings</li></ul>
Dutcher Lodge now the City of the Village of Douglas City Hall	1902	<ul style="list-style-type: none"><li>• Two-story white frame in Douglas</li><li>• Large meeting room on main floor</li><li>• Basement formally held Village’s fire truck</li><li>• State Register of Historic Places</li></ul>
Saugatuck Douglas District Library	1872	<ul style="list-style-type: none"><li>• Located in Douglas</li><li>• Former church/converted to the Douglas Athletic Club</li><li>• Updated library</li></ul>
Old School House	1866	<ul style="list-style-type: none"><li>• Former Douglas School (until 1957)/ currently being restored by and home of the Historic Society 138 Center St.</li></ul>



		<ul style="list-style-type: none"><li>• Two-Story building is classical style with pilasters around the doorway and a cupola on the roof</li></ul>
Lake Shore Chapel	1904	<ul style="list-style-type: none"><li>• Privately owned non-sectarian church located in the Shorewood section of the lakeshore</li><li>• Constructed by summer residents</li><li>• Church services held in July and August</li></ul>
Saugatuck Women’s Club	1934	<ul style="list-style-type: none"><li>• Brick meeting hall on the main street of Saugatuck</li><li>• Site of plays, reviews, wedding, cultural events</li><li>• Auditorium for the Chamber Music Festival (since 1988)</li></ul>
Saugatuck Douglas Historical Museum	1992	<ul style="list-style-type: none"><li>• Located on Kalamazoo Lake waterfront at Mt. Baldhead</li><li>• New exhibit provided each season by the Historical Society</li><li>• Museum open Saturday, Sunday, and Monday</li><li>• Operated by volunteers</li></ul>
Red Barn Playhouse	1952	<ul style="list-style-type: none"><li>• Professional summer stock theatre</li></ul>
Chain Ferry	1859	<ul style="list-style-type: none"><li>• Historic and still used to transport people across the river</li></ul>
Farmers markets	circa 1980	<ul style="list-style-type: none"><li>• Local seasonal farmers markets</li></ul>
Indian burial grounds	circa 1700’s	<ul style="list-style-type: none"><li>• Across from Saugatuck City Hall</li></ul>



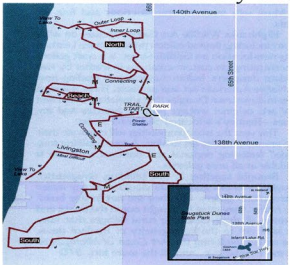
Tri-Community Interest Points Map

Oval Beach and Points of Interest Map



- KEYS:**
- = Traffic Signal
  - = Gas Station
  - = Historical Museum
  - = Visitors Bureau Office
  - = Douglas Village Hall/Police Station
  - = Saugatuck/Douglas Library
  - = Saugatuck Post Office
  - = Saugatuck Township Hall
  - = Saugatuck Village Hall
  - = Public Restroom (2 locations)
  - = Oval Beach (Route to Oval Beach marked in red)
  - = PARKING SHUTTLE BUS STOP (route in blue)
1. All Saints' Episcopal Church
  2. Allegan State Forest
  3. Arnold Palmer Golf Course "The Ravines"
  4. Boat Launching (3 locations)
  5. Bowling Alley
  6. Chain Ferry
  7. Children's Playground (2 locations)
  8. Christian Science Society
  9. "Celebration" and "Par-Ta-Tyme," Dinner Cruisers
  10. Clearbrook Golf Course
  11. Community Church of Douglas
  12. Cook Park
  13. Deep Harbor Marina
  14. Douglas Beach
  15. Douglas Congregational United Church of Christ
  16. Dune Rides
  17. Dunes State Park
  18. Farview Farm
  19. First Congregational Church
  20. Fighting Charters (2 locations)
  21. Ganags United Methodist Church
  22. Ghost Town of Singapore
  23. Hilltop Golf Center
  24. H.S. Tennis Courts
  25. Information Booth—lodging information, interactive phone board for accommodations
  26. Mt. Baldhead
  27. Oxbow School of Art
  28. Peterson's Mill
  29. Pier Cove Beach
  30. Pontoon Boat, Bicycle, and Kayak Rental
  31. Red Barn Playhouse
  32. Sailboat Charters "Sweetwater"
  33. Star of Saugatuck boat cruises
  34. S.S. Kewatin (Titanic era steamship museum)
  35. St. Peter's Catholic Church
  36. Saugatuck Christian Reformed Church
  37. Schultz Park
  38. Tennis courts/Basketball courts downtown
  39. Top Gun Hunt Club
  40. Tower Marina
  41. Unity Church on the Lakeshore
  42. U-pick Blueberries
  43. U-pick Orchards
  44. The United Methodist Church
  45. Vineyard/Winery tours
  46. West Shores Golf Course
  47. Wicks Park Gazebo
  48. Willow Park

Saugatuck Dunes State Park Cross Country Ski Trails



**TRAIL POST MARKINGS**  
**Green Arrowhead:** Going to Lake  
**Red Arrowhead:** Returns to Parking  
**Two Colors on Post:** Connecting Trail  
**Blue Diamond:** Walkway Confidence Marker

TRAIL NAME	COLOR	LENGTH
North	White	2.5 miles
Beach	Yellow	2.5 miles
Livingston	Red	2.5 miles
South	Blue	5.5 miles

**ABILITY**  
M = Most Difficult  
E = Easiest  
From US 31, take Exit 41—Blue Star Hwy. Go right on 64th Street to 138th Avenue, then west to park. State Park Vehicle Permit required. Large natural area with rugged dunes on Lake Michigan. 1094 acres. 13k marked, ungrounded trails plus additional unmarked trails. Restrooms available. Trail maps are available and posted on site.

Bike, Scenic Routes & Color Tours



Also enjoy the trails at Allegan State Game Area. The trails provide skiers with a choice of distances from 2 miles to 14 miles and are fully marked with direction-change arrows and reassurance markers.

Produced by the Saugatuck-Douglas Area Convention & Visitors Bureau  
(616) 857-1701



### REGIONAL RECREATION

The Saugatuck Douglas area is within close proximity to several excellent public facilities of regional significance. These include:

- Allegan State Game Area – offering hunting, fishing, camping, hiking, bird watching, cross country skiing, and outdoor sports.
- Saugatuck Dunes State Park – offering Lake Michigan access, hiking, bird watching, picnicking, and cross country skiing.
- Allegan County Parks- offering a variety of nearby outdoor parks including Westside County Park located on Lake Michigan, Dumont Lake County Park, and Little John Lake County Park.
- Township Parks – numerous other parks may be found in neighboring townships throughout the region.
- Lake Michigan – the proximity of Lake Michigan provides a tremendous recreational resource for the area. Activities to be enjoyed on the lake include power boating, fishing, sunbathing and swimming, wind surfing, sea kayaking, sailing, sight seeing, scuba diving and snorkeling, and nature photography.

### Commercial Recreation

In addition to public facilities, there are many privately owned and operated commercial recreational opportunities in the tri-community area. They include:

Name	Comments
Clearbrook Country Club	<ul style="list-style-type: none"><li>• 136 acres, 18 hole public golf course in Saugatuck Township</li><li>• Members only swimming pool</li><li>• Restaurant, bar, pro shop, driving range and guest rooms</li></ul>
The Ravines Golf Course and Country Club	<ul style="list-style-type: none"><li>• Arnold Palmer Signature Championship Course in Saugatuck Township.</li><li>• State-of-the-Art Practice facility.</li><li>• Clubhouse restaurant.</li></ul>
Laketown Golf Center	<ul style="list-style-type: none"><li>• Driving range and conference center</li></ul>
Saugatuck RV Resort	<ul style="list-style-type: none"><li>• Commercial Recreation Vehicle Campground in Saugatuck Township.</li></ul>
Marinas	<ul style="list-style-type: none"><li>• Over 900 slips for transient and seasonal boaters on the shores of Kalamazoo Lake and River</li><li>• Facilities include: Singapore Yacht Club, Saugatuck Yacht Club, Sergeant’s Docks, Coral Gable Marina, Saugatuck Yacht Service, Tower Marina, West Shore Marine, Point Pleasant</li></ul>



	Marina, , South Shore Marina, Walker’s Landing, Deep Harbor Marina, and Gleason’s Marina. Some of these facilities also offer boat launching, boat storage, repairs, nautical equipment, fuel sales, and rental of small boats and paddle boats.
Charter Fishing	<ul style="list-style-type: none"><li>• Charter fishing in Lake Michigan for salmon and lake trout is available from more than 25 charter boats in the area.</li></ul>
Saugatuck Dune Rides	<ul style="list-style-type: none"><li>• Seasonal dune buggy rides.</li></ul>
Wades Bayou	<ul style="list-style-type: none"><li>• Canoe and kayak rentals.</li><li>• Dinghy docks</li></ul>
Pine Trail Camp	<ul style="list-style-type: none"><li>• Seasonal youth camp programming and recreation activities.</li></ul>

**COMMERCIAL RECREATION**

**Excursion Boats** provide leisurely cruises on the river and out into Lake Michigan. They include the Star of Saugatuck, a paddle wheel boat, Jet Ski rentals from Coral Gables in the City of Saugatuck, and kayak rentals from Wade’s Bayou in the City of the Village of Douglas. The Saugatuck Chain Ferry, established in 1838, offers a way across the Kalamazoo River near the road, Perrymen Drive, to Oval Beach. The craft is hand-cranked from shore to shore on a chain.

**Bike Rentals** are readily available from retail and rental operations with hourly, daily or weekly rates.

**Just Add Water** for stand up paddle boards, skim boards, boogies boards and beach gear.

**Saugatuck Dune Rides** in Saugatuck Township offers dune schooner rides through scenic, privately owned lakeshore dunes near Goshorn Lake.

**Harbor Duck** amphibious water taxi that tours Douglas, Saugatuck and Saugatuck Township.

**Saugatuck Center for the Arts** provides year-round high quality arts programming, plays, etc.

**Local boat rentals.**

**Lakeview Lanes** in Douglas, provides recreational opportunities and Bowling leagues for a large number of local residents in the fall and winter months.

**Art Galleries.** For those whose recreation is visiting art galleries, there are about a two dozen galleries, and artists' studios in the tri community area.





**Local Stores.** For those whose recreation is shopping, the area offers over 200 shops with a great variety of goods.

**Bed & Breakfasts.** The thirty-one Bed and Breakfast establishments in the area also provide entertainment for their guests.

People who enjoy strolling along the busy Lake Kalamazoo waterfront will find in Saugatuck one of the longest boardwalks in Michigan, stretching from Sergeant's Marina to Wicks Park.

## **BASIS FOR ACTION PROGRAMS**

### **GOALS AND OBJECTIVES**

The three governmental units consisting of the City of Saugatuck, the City of the Village of Douglas and Saugatuck Township came together in 1988 to develop the Tri-Community Comprehensive Plan, which was updated in June of 2005 and is in the process of being updated in 2013. Since that time, the Saugatuck School system has taken on a significant role in recreation programming. A special milage was passed in 2005 to create a department within the school system for recreation programming. The communities continue to have a strong commitment to joint planning efforts.

The greater Saugatuck/Douglas community intends to advance the following goals:

*GOAL: Protect and enhance the natural aesthetic values and recreation potential of all waterfront areas for the enjoyment of area citizens and visitors to the community.*

*GOAL: Enhance the well-being of area residents by providing a variety of opportunities for relaxation, rest, activity, and education through a well balanced system of public parks, recreational facilities, and activities to serve the identified needs of the area.*

*GOAL: Provide recreational opportunities for persons of all ages and physical ability.*

### **IMPLEMENTATION STRATEGIES**

1. Enhance and expand the trail system for non-motorized activities throughout and beyond the area. This is the main collaborative goal of all governmental entities involved, to provide safe, networked access between communities and points of special interest such as beaches and parks. Work with other government entities and non-profit entities like "Friends of the Blue Star Trail" to obtain matching funds for grants to extend existing non-motorized trails.
2. Continue strong recreational programming that provides a diverse range of physical and non-physical activities.



3. Continue to collaborate and share resources among the communities to extend limited financial and human resources.
4. Investigate the sustainability of an area-wide pool/fitness center with multi-purpose functions like meeting areas for seniors and young adults.
5. Maintain and upgrade existing park facilities as a backdrop for community living.
6. Where the opportunity arises, secure additional riverfront and lakefront access. Consider conservation easements or visual access if outright ownership cannot be secured.
7. Augment natural areas and tie parks and natural features together with wayfinding systems and trails.
8. Improve the accessibility of park and trail facilities for people with mobility challenges.
9. Improve shore fishing access.
10. Expand wildlife habitat enhancement opportunities.



## ACCOMPLISHMENTS SINCE 1990

Since this plan was first developed in 1989, the following projects have been accomplished:

### CITY OF SAUGATUCK:

1. Improved and preserved the Willow Park area.
2. Built rest rooms in Village Square/remodeled the rest rooms in Wicks Park.
3. Put lights on the Village Square tennis court/replaced basketball court.
4. Expanded the Village Square underground sprinkling system.
5. Built a new Oval Beach house, changing facility and rest rooms.
6. Acquired riverfront property next to Wicks Park.
7. Identified city parks with signs.
8. Purchased historic chain ferry with river front access.
9. Added Coghlin Park in City Park System.
10. Added Peterson Preserve.
11. Landscaped Peterson Preserve Park, added walking path, irrigation, and benches.
12. Repaired upper dam at Peterson Preserve Park.
13. Installed dingy dock for public use at Coghlin Park.
14. Completed gazebo in Coghlin Park.
15. [Reconstructed the Mt. Baldhead Stairs.](#)
16. [Purchased and annexed newly acquired land north of Oval Beach.](#)
17. [Reconstructed the Spear Street Boat Launch.](#)
18. [Replaced the gazebo roof, updated landscaping, and replaced break-wall walkways in Wicks Park.](#)
19. [Updated underground irrigation and water control features in the Peterson Preserve.](#)
20. [Updated signage for Public Restrooms at Village Square Park.](#)

### THE CITY OF THE VILLAGE OF DOUGLAS:

1. Improvements at Beery Field include new fencing, lights, a rest room facility, basketball court, landscaping, play equipment and an electronic score board.
2. Improvements to Schultz Park include launching facility, a soccer field, softball field, expanded parking, landscaping and under ground sprinkling of the soccer field.
3. Improvement to Dutcher Lodge / Village Hall include completion of the renovation of the middle floor, purchase of remaining portions of the lodge with the goal of renovating both the lower and upper levels.
4. Identifying all City of the Village of Douglas parks with signs.
5. Developing of Veterans Walk Park and Tannery Creek Outlook.
6. Development of the Gerber Street water access.
7. Acceptance of property from the family of Alice McClay and creation of park in her honor.



8. Renovation of steps and installation of English and Spanish rip tide swimming safety signage at the Douglas Public Beach.
9. Completion of the City of the Village of Douglas Comprehensive long range Park's and Recreation Plan (attached).
10. Acquiring of vacant building for use as Annex for the City of the Village of Douglas Public Library.
11. Contracted with a private vendor to offer Kayak Rental service at Wade's Bayou.
12. Worked collaboratively with the Saugatuck Douglas Historical Society to create an educational and recreational center and Heritage Garden, part of the Old School House Project.
13. Opened the Allegan County Historical Heritage Trail.
14. Developed a walking tour that highlights the variety of historic significance architectural styles of homes and building in the City of the Village of Douglas.
15. Established the Tri-Community Planning Committee charged with implementing the Tri-Community Plan including the coordination of recreational resources between the three communities.
16. Began work to complete a separated pedestrian trail from Wade's Bayou to the Douglas Beach known as the Beach to Bayou Trail.
17. Began work to complete the Douglas segments of the "Friends of the Blue Star Trail" non-motorized trail to install and connect existing non-motorized trail extensions from the City of South Haven to the City of Saugatuck, including 1.6 miles of trail within the City of Douglas.
18. Purchased 16.4 acres of space in Saugatuck Township adjacent to the southwesterly corner of the City of Douglas to accommodate future parks and recreation needs.

**SAUGATUCK TOWNSHIP:**

1. Acquired and extended sewer/water services
2. Continued to support and expand youth programming
3. Non-Motorized Trail
  - funded "Friends of Blue Star Trail" feasibility study for trail connections from Ganges to City of Douglas, City of Saugatuck and Laketown Township.
  - developed 1.6 miles non-motorized trail in the township. First trail in Saugatuck Township with year round access.
  - funded trail map
4. Tails and Trails Dog Park
  - developed first Dog Park and dog walking trails in Tri-Community
  - lighting was added to entrance and large dog enclosure area
  - added memorial benches
  - added landscaping and sand play sand mound for dog activities.
  - bad weather shelter for small dog enclosure.
5. Township land at 134<sup>th</sup> Ave contiguous to Tails and Trails Dog Park



- installed traffic bollards and swing gate
- 6. River Bluff Park
  - memorial bench
  - Allegan County Heritage Trail learning station/kiosk and roadside signage
  - removed dilapidated single bay swing set
  - installed safety compliant double bay swing set
  - installed new picnic tables, grills, park bench
  - planted landscaping and sprayed poison ivy
  - 2003 grant from Michigan Coastal Management (see details below)
- 7. Sundown Park
  - removed dilapidated picnic table
  - installed new park bench
  - installed new split rail fence
  - removed debris and scrub trees from north end of park
  - worked with resident to have privacy fence installed on south side of park
  - planted landscaping on north end of park and around park bench
- 8. Blue Star Hwy. Memorial Park
  - continued operation and maintenance by township
  - new signage circa 2000

Additionally, since 2002 the township has received 2 grants critical for large scale capital improvement:

In 2003 the Township received a grant from the Michigan Coastal Management Grant program through the MDEQ for improvements to River Bluff Park. The total cost of the project was \$42,600, of which \$22,600 was supplied from the Township. Recent park pictures can be viewed on the Twp website @ <http://www.saugatucktownship.org/park.htm>

2003 River Bluff Park improvements included:

Landscaping

- Opened views to Kalamazoo River from upland forest area
- Selectively trimmed and branches and vines
- Removed dead trees, stumps, and brush
- Sprayed Poison Ivy
- Landscaped with 4 inches of top soil and hydro-seed with mulch and fertilizer in new open space
- Spread new wood chips on lower park level

Excavating

- Removed of scrub trees, stumps, wood piles, and brush



Removed trash debris and dilapidated restroom facilities

New Construction

- Constructed 2 course 3 inch asphalt parking lot with marked parking spaces
- Moved existing entrance sign and installed new entrance sign
- Installed handicapped parking signage
- Installed removable Wood Bollards at parking lot cul-de-sac

In 2007 an 80% grant was obtained through a program of the Federal Highway Administration for congestion mitigation and air quality (CMAQ) for a Non-Motorized Trail. The trail is approximately 10ft wide and 1.7 miles in length from Saugatuck City limits to Laketown Township limits and was paved with asphalt except and included a 14 foot wide treated timber boardwalk spanning Goshorn Creek.

The non-motorized trail route is from Saugatuck City thence northerly on Holland Street (Washington Ave) to Blue Star Highway, thence northerly on Blue Star to 64<sup>th</sup> Street, thence north on 64<sup>th</sup> to Laketown Township limits. Bids were solicited by the Michigan Department of Transportation and awarded to the lowest qualified bidder subject to the approval of Saugatuck Township and the Allegan County Road Commission who acted in partnership and conjunction with the Federal Highway Administration and Michigan Department of Transportation. A maximum amount of \$295,070 was made available for Saugatuck Township/Allegan County Road Commission for the purpose of constructing the trail. The funds for design and engineering were provided for by the Township.

Prior to 2002 the township received the following grants:

River Bluff Park improvements	1985	Coastal Zone Management
Community Rec Building improvements (Douglas Village)	1980	U.S. Department of Energy Chicago Regional Office
General Park Maintenance	1977	CETA Funds
General Park Maintenance	1972	Federal Emergency Employment Act
River Bluff Park improvements	1971	State Recreation Bond Fund for Development



**SAUGATUCK PUBLIC SCHOOLS:**

1990-2000

1. Completed baseball dugouts.
2. Built a concession stand at S.H.S.
3. Built a softball field at Douglas Elementary School.
4. Expanded the weight room at S.H.S
5. Added two gymnasiums.
6. Added indoor concessions.
7. Added new locker rooms.

2008-2013

Project	Date	Cost	Source of Funds
Added Middle School Gymnasium, Added one additional boys and girls locker rooms	2002	\$1.98 million	Saugatuck Public School Bond Issue
Built new softball field, with dugouts and home and visitor bleachers, 4 Tennis courts, one tennis backboard, with 3 outdoor basketball hoops, and additional parking	2004	\$323,903	Building and site levy: \$213, 317 Saugatuck Public Schools Bond Issue: \$86, 586 City of Saugatuck \$30,000
Purchased Property for football field and track renovations	2007	\$316,859	SPS Building and Site levy \$316,859
Expanded Weight Room – Saugatuck High Schools	2006	\$16,000	Blue Cross Blue Shield Wellness Grant
Saugatuck High School Gym renovations – new bleachers, new gym floor refinishing, upgraded lighting, expanded girls locker rooms and lockers	2007	\$455,326	SPS Building and Site levy \$455,326
Cross Country Course	2005	In-kind	Community partnership with Fenn-Valley Winery for use of their fields. Course was created through donated labor by school district.
Built new a new playground structure at Douglas Elementary School	2005	\$190,000	General Fund



Constructed Community Recreation Office	2006	\$22,137	SPS Building and site levy: \$22,137
---	------	----------	--------------------------------------

2008 – 2013

Project	Date	Cost	Source of Funds
Constructed a varsity baseball field at Douglas Elementary School	2009	\$800,000	Saugatuck Public School Bond Issue 2009
Built a new football stadium with bleachers and concessions at Saugatuck High School.	2009	1.5 million	Saugatuck Public School Bond Issue 2009
Built a new all weather track at Saugatuck High School.	2009	1.5 million	Saugatuck Public School Bond Issue 2009
Built art wing at Saugatuck High School.	2009	\$500,00	Saugatuck Public School Bond Issue 2009





**BASIS FOR ACTION**  
**AREA WIDE RATIONALE**

**Dredging of the Kalamazoo River:** Our economy is based on tourism and our lake access is vital. The fishing boat charters and the companies offering boat tours of the area must have lake access. The communities also support 498 large boat slips and numerous small boat slips. These boaters use the lake for water recreation and fishing. The Kalamazoo River and Lake Michigan access must be the highest priority to all entities involved. The Kalamazoo Harbor Commission has been formed by the tri-communities to implement the recommendations within the Kalamazoo Harbor Master Plan to secure funding.

**Non motorized trails:** All three communities plan to develop sections of non-motorized trails and bicycle paths within their boundaries. There is wide spread use of bicycles in the area by young people who work, by tourists, and by area bicycle groups. Many of the areas are very congested and the bicycles try to compete with the automobiles. The 2002 plan outlines a bicycle path for the area. Bicycle trails ranked highest on the resident priority list and visitors to the area ask constantly for maps of biking trails. This is a very high priority for the area.

**Develop Brochure on Area Parks:** An area wide parks and recreation brochure has been discussed for a number of years. The coordinating effort remains difficult, but the need is there. Many of our residents are unaware of the extensive area park system. Tourists are always asking for such a map and are always asking for directions to the parks. This is a high priority.

**Winter Recreational Facilities:** The area does a nice job of providing three season recreation opportunities, but lacks winter recreational opportunities. The survey of residents had as top priorities an ice rink, sledding, and toboggan area. Since the Saugatuck area tourist season has now stretched to all four seasons we would like to have these facilities available to our tourists too.

**Historical Museum:** The Historical Museum/Learning Center is an added gem in the Saugatuck Douglas area and all of the governmental units wish to support this project. The actual museum building is located on the river in Saugatuck and the Learning Center is located in the Old School House in Douglas. Funds are needed to expand exhibits and to supplement local donation support. The museum/learning center adds depth to our tourist offerings and gives roots to its residents. It provides enjoyment to all of our communities. This is a medium priority.

**Swimming Pool. Visitor Convention Center. Tot Lots:** These items are a low priority, but remain noted for the following reasons. An indoor swimming pool remains very high priority on the survey of residents but the governmental units have looked at the cost of building and maintaining a facility and simply cannot afford the project. The area still does not have a building to provide meeting rooms for companies who would like to bring employees here for training. This remains an interest of the lodging concerns and the CVB. There still is an interest in providing small areas in the neighborhoods where young children can gather safely to play.



### CITY OF SAUGATUCK RATIONALE

**McClendon Property (formerly known as Denison Property):** ~~The City of Saugatuck is investigating various options to improve the usability of this site. These include the possible construction of an overlook deck and improving way-finding signage along the existing trail system to prevent further dune erosion. The City of Saugatuck is investigating various options for possible acquisition of the property immediately north of the City's Oval Beach property. The property is currently in private ownership and the City has expressed interest in obtaining the property if the owner becomes interested in selling. The McClendon Property consists of woodlands, dunes and approximately one half mile of Lake Michigan shoreline. Development would be restricted to providing environmentally sensitive public access using the most passive methods available. Any acquisition would most likely involve a cooperative effort between Federal, State, and local agencies to acquire this incomparable land on behalf of future generations.~~

Formatted: Justified

**Mount Baldhead Park:** Mount Baldhead Park is one of the oldest and most popular city parks. A viewing platform at the river's edge is next to the recently improved Historical Society's museum in the former city pump house. In 2001, the dome and tower structure were repaired and repainted; keeping this area safe and secure is an ongoing effort. A total reconstruction project involving the replacement of the 282 steps, hand rail and landings leading up to the highest point of elevation ~~is planned for 2008~~ was completed in 2009. Additional improvements needed for this area include rebuilding the upper deck, routine maintenance of the picnic shelter, replacement of the existing rest rooms, and paving the gravel parking lot which is shared by those who visit the park's features as well as providing overflow parking for nearby residents. The City is also interested in adding various informational kiosk at the upper deck and locations near the rest rooms noting significant historical information regarding the site, and other site modifications at the upper section to improve the usability of the park.

**Spear Street Boat Launch:** ~~The Spear Street public boat launch is used by residents and visitors. The launch is in close proximity to Lake Michigan which affords patrons quick access to Lake Michigan. The City will rebuild the boat launch in 2008.~~

**Oval Beach Area:** The Oval Beach continues to be the area's most popular public beach and attendance increases each year. The City ~~will be making~~ has made major improvements to the deck/viewing area at the concession stand and the parking entrance collection station in 2008. Additional needs in the future include the development of a walking/biking path from Park Street to the beach and repair of the parking lot, expansion of the north parking lot and the construction of a new shed to house emergency and maintenance equipment. The concession stand facilities and rest rooms will be in need of updates, including replacement of the roofs in the near future.



**Wicks Park:** Wicks Park is a wonderful place to relax and enjoy the front-row view of the river, the boats cruising in and out, and the city’s Chain Ferry crossing the river. In 1999, the public restrooms were remodeled and ~~the surrounding landscaping was improved. The~~ the gazebo roof is scheduled for replacement was replaced in 2008/2011. ~~The current restroom facilities will need upgrading as they are used very heavily by the public in this popular park. The City will also explore ways to improve the usability of the space, especially for events such as Music in the Park.~~

**Peterson Preserve:** In 2007 the City completed the improvements to the Peterson Preserve Park totaling over \$50,000. These improvements consisted of underground irrigation throughout the entire park, landscape improvements with plantings, a pathway and new park benches, and the replacement of the water control structure under Simionson Drive. ~~The Park is in need of a new water control structure under Simonson drive to allow the main body of water at the preserve to remain constant preserving the views of the park visitors and protecting the wildlife. The City does not have any plans for further modifications to this site, but will continue maintenance on an as needed basis.~~

**Cook Park:** Cook Park is another expansive stretch of waterfront property that affords residents and visitors an unobstructed view of the Kalamazoo River with direct access to the boardwalk that extends throughout the town. ~~While no further modifications are scheduled at this time, the City will continue to review ways to better utilize this Park. The Park is sparsely used because guests and residents alike are not sure where Cook Park begins and ends and the private Singapore Yacht Club begins. The city also would like to add more picnic tables to this area. Residents rate open riverfront space high on their priority list and tourists would certainly be able to enjoy the area.~~

Formatted: Justified

**Village Square Park:** ~~Over the last several years, the City has undertaken several improvement projects in this four cornered park in the heart of downtown. Underground irrigation was installed to support the increased garden area’s, new playground equipment was installed to support the increased garden area’s and new playground equipment was installed, along with an addition to the existing Veteran’s memorial. All of these improvements area focused in the same north west quadrant of the park, leading to overcrowding and over use. With the increased physical size of the playground equipment, it is agreed that the Veterans Memorial will be relocated to the south west quadrant of the park in a more respectful and appropriate location. With the increased number of sculptures placed around town and through the Art Round Town Program, the south-west quadrant should be developed into a quieter and less intensive public area.~~

Formatted: Justified





**Non motorized path:** With the increased number of cars in the City throughout the entire year, it has long been a goal to establish a walking/biking path throughout town. The recent acquisition of the Peterson Nature Preserve and the Interurban Trail, lends itself to the development of a walking/biking path from downtown through the Preserve, on the Interurban Trail to North Street, to Maple Street and then back to downtown. Part of the attractiveness of a project like this would draw people to walk along the nature areas of the town and would provide safe and easy access to and from town.

Formatted: Justified

**Coughlin Park:** Coughlin Park has recently undergone several site modifications include the construction of a Gazebo and upgrading electrical service, but continues to be underutilized. The City will explore master-planning options to improve the usability of this site.

Formatted: Font: Bold

**Information Booth Park:** Located within the public right-of-way at the intersection of Butler Street and Water Street, Information Booth Park has a long history of adapting to the needs of the community. The City is exploring site improvement options to update and increase usability of this park. These include the possible construction of a new structure, benches, and other infrastructure upgrades.

### SAUGATUCK PUBLIC SCHOOLS RATIONALE

The school district development priorities include:

1. Additional football field – Community Recreation
2. Soccer fields – Community Recreation
3. Softball field – Community Recreation
4. Outdoor bathrooms and parking – Community Recreation
5. Baseball field – Community Recreation

The above facilities are needed to:

- provide a full compliment of recreational activities in a safe and healthy environment;
- provide facilities that meet regulation size and shapes to ensure a well rounded series of recreational opportunities;
- meet the recreational needs and desires of a broad range of students;
- provide recreational facilities which also provide health related benefits to students, and community users;
- meet the needs of the general public.



## SAUGATUCK TOWNSHIP RATIONALE

**Non-Motorized Trail(s)**- Laketown Township constructed an extension off of the Saugatuck Township non-motorized trail at 64<sup>th</sup> Street in 2009. This will be the first extension to date from the Saugatuck Township trail. Additional trail extension are in the planning process with the “Friends of the Blue Star Trail” and Allegan County Parks Department to take place Saugatuck Township and installed with grant assisted funds and /or property developers and/or neighboring municipalities with Allegan County along the Blue Star corridor that intersects the Tri-Community. A connecting trail along Old Allegan Road could connect River Bluff Park to 63<sup>rd</sup> St to 60<sup>th</sup> St. and eventually to the Allegan County Swing Bridge park in New Richmond. These projects are very possible with future CMAQ funding and/or additional revenues from special millages like those in place at Laketown Township.

**River Bluff Park**-MDEQ grants in the past funded the design and engineering of projects pertaining to coastal management and hopefully can be made available for the improvement of water access, dock, gazebo near the riverside areas of the park. River dredging efforts will have an additional impact on the water accessibility of this park’s waterfront features. Capital improvements to the new memorial bench, swing set, large gazebo, outdoor amphitheatre and picnic enclosure have been considered for open space uses for the park.

**Dog Park / 134<sup>th</sup> Ave Property**-The Dog Park is open all season and is very well developed except for the parking lot noted in the plan from RJM Design, Inc. The parking lot and large dog enclosure have both received lighting since 2008. The entrance from 134<sup>th</sup> Avenue and parking lot would benefit greatly from pavement and drainage basin. Other items for the Dog Park and surrounding acreage are noted in the plan by RJM Design, Inc. and include a playground, basketball courts, gazebo, bathrooms facilities, additional parking, nature trails, and a pond for fishing.

**Sundown Park**-This park has received a new bench and landscaping since 2008. Improvements include a new split rail fence, a privacy fence, park bench, the removal unsightly debris, and the removal trees on the north end of the property. This park does extend to Lake Michigan, however access has been removed and deemed too costly due to maintenance.

**Blue Star Memorial Park**-This park received a new sign circa 2002 as seen on the township parks website <http://www.saugatucktownship.org/parks/default.html>. The park lies opposite the Township’s non-motorized trail along Blue Star Highway and west of the Spectator’s Bar and Grill parking area. It’s proximity to the existing trail may promote expanded use of this park. The enclosure area was repaired in the 1990’s and is aging, should funding be available, the enclosure would be a priority. Its disrepair would be an eyesore to a corridor of the Tri-community.



**Alamanchier Park**-This is a wooded and undeveloped area along Moore's Creek south of the Riverside Cemetery. It has received little or no capital improvement and exists within a large, predominately wet parcel of property extending from the cemetery to North Street. The Alamanchier Park area is higher in elevation and suitable for park use, and according to minutes from the late 1970's, was considered as an area where residents could net and fish trout from Moore's Creek. This has potential for public access to Moore's Creek.

**63<sup>rd</sup> Street Boat Launch**- A BSA Eagle Scout project was completed in the Fall of 2013 and added benches near the restroom facilities at this boat launch in Saugatuck Township that is owned and operated by the DNR. It provides boater access up river from the Schultz Park boat launch (City of Village of Douglas) and has has parking, picnic facilities, and restrooms. Currently, the launch suffers from low water levels and is inaccessible for standard motor boats. If the township should participate in a means to dredge the Kalamazoo Lake and/or the Kalamazoo River this site should be taken into consideration; however, it is a considerable distance from the dredge areas referred to in the Kalamazoo Harbor Master Plan Technical Report of 8/14/2007.





# RJM Design, Inc.

Land Planning / Landscape Architecture

## Cost Estimate For: Saugatuck Township Park

Saugatuck Township, Allegan County, Michigan  
October 18, 2005

<u>Item</u>	<u>Quantity</u>	<u>Units</u>	<u>Cost/Unit</u>	<u>Total</u>
<b>SITE CONSTRUCTION</b>				
<b>Entrance Drive &amp; Parking</b>				
Bituminous Entrance Drive	1,120	SY	\$15.00	\$16,800.00
24 Car Bituminous Parking Lot	1,230	SY	\$15.00	\$18,450.00
<b>Subtotal</b>				<b>\$35,250.00</b>
<b>Picnic Area</b>				
Restroom Building & Shelter	1	LS	\$50,000.00	\$50,000.00
Tables, Grills, and Litter	5	EA	\$3,000.00	\$15,000.00
Basketball Court	1	LS	\$25,000.00	\$25,000.00
Beach Area	800	CY	\$3.00	\$2,400.00
<b>Subtotal</b>				<b>\$92,400.00</b>
<b>Dog Park Area</b>				
13 Car Bituminous Parking Lot	1,050	SY	\$15.00	\$15,750.00
<b>Subtotal</b>				<b>\$15,750.00</b>
<b>Nature Area</b>				
8' Wide Nature Trails	5,800	LF	\$3.50	\$20,300.00
Floating Pedestrian Footbridge	800	SF	\$30.00	\$24,000.00
Gazebo	1	EA	\$15,000.00	\$15,000.00
Picnic Pods	5	EA	\$3,500.00	\$17,500.00
<b>Subtotal</b>				<b>\$76,800.00</b>
<b>Fishing Pier</b>				
	250	SF	\$30.00	\$7,500.00
<b>4.8 Acre Lake (6' avg. depth)</b>				
	46,500	CY	\$3.00	\$139,500.00
<b>Landscaping and Signage</b>				
	1	LS	\$25,000.00	\$25,000.00
<b>CONSTRUCTION TOTAL</b>				<b>\$392,200.00</b>
<b>Professional Fees 10%</b>				<b>\$39,220.00</b>
<b>Contingency @ 10%</b>				<b>\$39,220.00</b>
<b>PROJECT TOTAL</b>				<b>\$470,640.00</b>





## CITY OF THE VILLAGE OF DOUGLAS RATIONALE

### 1. Douglas Beach:

- a. Install drinking fountain
- b. Construct maintenance building to house emergency response equipment
- c. Install new sinks and toilets in restrooms
- d. Install 911 telephone

### 2. Schultz Park:

- a. Landscape to include shade trees
- b. Replace playground equipment
- c. Add drain tiles around soccer field
- d. Expand and pave additional parking areas (utilizing geo blocks)
- e. Construct maintenance building to store sports equipment
- f. Construct public Rest rooms

### 3. Wade's Bayou Memorial Park:

- a. Remove existing Garage/Storage facility after constructing new D.P.W. building
- b. Construct rest rooms
- c. Install boardwalk
- d. Create multi purpose plaza with benches and barrier free picnic tables
- e. Landscape
- f. Install lighting
- g. Build fishing pier
- h. Increase parking
- i. Explore feasibility of water front amphitheatre
- j. Install additional docks and boating facilities for transient boaters

### 4. Union Street Launch Ramp

- a. Purchase property to increase parking
- b. Install lighting
- c. Add barrier free picnic tables and benches

### 5. Harold Beery Field:

- a. Construct maintenance building to store sports equipment
- b. Winterize restrooms for year round use

### 6. Prepare a long range plan to for the 16 acre parcel recently purchased in Saugatuck Township near Blue Star Highway and Wiley Road.



7. Purchase land to expand the City of the Village of Douglas park and recreation offerings.

The above facilities are needed to:

- provide a full range of recreational opportunities;
- meet the identified recreational needs of the residents and visitors;
- Ensure the long term quality and use of facilities;
- meet the recreational needs of special populations;
- meet the recreational needs of all ages.



**CAPITAL IMPROVEMENT SCHEDULES**

The Capital improvement schedules are based on a five year time sequence, coinciding with the life of the plan. The schedules identify planned improvements, estimated construction costs, desired year of completion and potential funding sources. Due to the nature of project funding, the schedules are somewhat fluid and are subject to ongoing evaluation and modification. For example, a project scheduled for the 2014-2015 period could, theoretically, be moved forward should a funding source for that project surface. This might occur, for instance, with the receipt of an unexpected philanthropic donation. It is noted that project costs are based on general concept designs. As such, costs are subject to change based on final project scope and detailed design.

**CITY OF SAUGATUCK**

Fiscal Year	Improvement	Cost/Anticipated Funding Source
2013-14	<u>Installation of way-finding signs and deck platform for Denison Property.</u>	▪ <u>\$10,000</u>
2014-15	<u>Expansion of the north parking lot, resurfacing of existing parking lots, and building upgrades at Oval Beach.</u>	▪ <u>\$200,000</u>
2015-16	<u>Construction of a non-motorized path from Park Street to Oval Beach.</u>	▪ <u>\$2,000,000</u>
2016-17	<u>Mt. Baldhead parking lot improvements and site modifications at upper section</u>	▪ <u>\$200,000</u>
2017-18	<u>Site improvements including possible restrooms at Coughlin Park</u>	▪ <u>\$150,000</u>

Formatted: Bulleted + Level: 1 + Aligned at: 0.25" + Indent at: 0.5"

Formatted: Bulleted + Level: 1 + Aligned at: 0.25" + Tab after: 0.5" + Indent at: 0.5"

Formatted: Bulleted + Level: 1 + Aligned at: 0.25" + Tab after: 0.5" + Indent at: 0.5"

**SAUGATUCK PUBLIC SCHOOLS**

2013-14	Planned Improvements	Estimated Costs	Funding Source
	Outdoor football fields, soccer fields, baseball fields, parking and outdoor restrooms	\$500,000	Recreation funds Recreation milage Partnership with local



			governments.
--	--	--	--------------

**SAUGATUCK TOWNSHIP**

Fiscal Years	Planned Improvements	Estimated Costs	Funding Sources
<b>2013-2014</b> Non Motorized Trail	1. Extend Non-Motorized Trails	1. \$66,890 (grant assisted) - \$295,070 (Twp funded)	General Fund MDOT-CMAQ Grant Parks Special Millage
<b>2014-2015</b> River Bluff Park	1. Reconstruct/remodel boat landing dock, stair access, and riverside gazebo/picnic table 2. Reconstruct/remodel trail bridges and benches. 3. Add trail signage and additional nature/history learning station(s) pedestals 4. Landscape/remove unsightly trees and expand open spaces above river area 5. Construct observation deck/tower at river overlook area 6. Service connection to municipal water utility 7. Install Restroom facilities	1. \$1,500 - \$3,000 2. \$1,500 per bridge, \$600 per bench 3. \$150 per sign, \$2,000- \$2,500 per learning station 4. \$2,000 - \$3,000 5. \$4,400 - \$5,000 6. \$9,000 7. \$25,000 - \$30,000	General Fund MDEQ, Michigan Coastal Grant DNR Grant Parks Special Millage Donations/Volunteers



<p><b>2014-2015</b> Tails and Trails Dog Park  and  134<sup>th</sup> Ave township acreage, parcel numbers (20-002-016-10, 20-002-016-00, 20-002-017-00, 20-002-021-00)</p>	<p>1.Lighting in enclosures and parking area 2.Pave 13 car lot and entrance way 3.Install additional benches in large and small dog enclosures 4.Add trail signage 5.Expand trail system throughout adjacent township acreage, 8ft wide at 5,800 Lft. extension. 6.Expand fenced enclosure areas  <u>134<sup>th</sup> Ave. Twp Acreage surrounding Dog Park</u>  7.Adhere to 9/2005 Saugatuck Township Park Master Plan by Prein &amp; Newhof 8.Add nature/history learning station(s) pedestals</p>	<p>1. \$4,400 - \$5,000 per light 2. \$15,750 – \$18,000 3. \$600 per bench 4. \$150 per sign 5. \$20,000 6. \$5,000 - \$6,000 7. \$430,000 - \$470,000 8. \$2,000 - \$2,500</p>	<p>General Fund  DNR grant  Parks Millage  Donations/Volunteers</p>
<p><b>2015-2016</b> Sundown Park</p>	<p>1.Seed northern area 2.Replace lakeside fence 3.Pave roadside parking area 4.Add nature/history learning station(s) (pedestals)</p>	<p>1. \$650- \$1,000 2. \$7,450 - \$8,450 3. \$1000 - \$1,200 4. \$2,000 - \$2,500</p>	<p>General Fund  MDEQ, Michigan Coastal grant  DNR  Parks Millage  Donations/Volunteers</p>
<p><b>2015-2016</b> Blue Star Memorial Highway Park</p>	<p>1.Remodel/Replace enclosure 2.Replace grills 3.Add paved parking 4.Add nature/history learning station(s) (pedestals)</p>	<p>1. \$1,200 - \$3,000 2. \$260 per grill 3. \$10,000 - \$15,000 4. \$2,000 - \$2,500</p>	<p>General Fund  DNR grant  Parks Special Millage  Donations/Volunteers</p>
<p><b>2016-2017</b> Amalanchier Park</p>	<p>1.Provide access/use to and landscape area along Moore’s Creek and wooded township</p>	<p>1. \$5,000 - \$8,000 2. \$2,500 - \$3,500 3. \$222 per table,</p>	<p>General Fund  DNR grant</p>



	<p>acreage                  2. Install trail system, 8ft wide at 615Lft                  3. Install picnic tables/grills                  4. Play equipment                  5. Install signage at park and along Holland Street, Blue Star Hwy, and 66<sup>th</sup> St.                  6. Add nature/history learning station(s) (pedestals) at park and along trail</p>	<p>\$260 per grill                  4. \$6,500 - \$8,000                  5. \$150 per sign                  6. \$2,000 - \$2,500</p>	<p>Parks Special Millage                   Donations/                  Volunteers</p>
<p><b>2017-2018</b>                   63<sup>rd</sup> Street MDNR boat launch</p>	<p>1. Maintain downstream access to boat launch with Alternative #1 in Kalamazoo Harbor Master Plan.                  2. Match MDNR funds to improve boat launch existing facilities/signage along 130<sup>th</sup> Ave/63<sup>rd</sup> Street</p>	<p>1. \$20-30 Million                  2. \$10,000 - \$20,000</p>	<p>DNR grant                   General Fund                   Donations/                  Volunteers                   Special Assessment                  District funds</p>

**CITY OF THE VILLAGE OF DOUGLAS**

**Fiscal Year   Planned Improvement   Estimated Cost   Funding Source**

2014-15	<p><b>Wade's Bayou Memorial Park</b>                  Remove garage storage facility.                  Explore feasibility of waterfront amphitheatre.                  Paint Kalamazoo Lake Sewer &amp; Water Authority Buildings,                  Install lighting, landscape, build fishing pier.                  Construct multi purpose plaza with benches and barrier-free picnic tables.                  Construct Board walk, and bathrooms.                  Increase parking.</p>	\$400,000	City/DNR
2014-15	<p><b>Non-Motorized Trails</b>                  Beach to Bayou Trail - construct                  remaining 0.5 miles of trail to the Douglas Beach.</p>	\$500,000	City/DNR



Blue Star Trail – enhance existing walkway between Center Street and the Blue Star Bridge to accommodate bicycle traffic and complete remaining trail from Wiley Road to south city limits.

- 2016-17 **Douglas Beach:**  
Install drinking fountain. \$100,000 City/DNR  
Create view corridors with selective tree trimming.  
Explore feasibility of ADA accessible deck overlooking Lake Michigan  
demarcate boundaries of public beach area with permanent fixtures to protect adjacent properties from trespass and to ensure full use of public areas.  
Construct maintenance building to house emergency response equipment.  
Install new sinks and toilets in restrooms.  
Install 911 telephone.
- 2017-18 **Schultz Park:**  
Install new net & fencing on tennis court \$300,000 City/DNR  
Landscape to include shade trees  
Replace playground equipment  
Add drain tiles around soccer field  
Expand and pave additional parking areas (utilizing geo blocks)  
Construct Maintenance Building to store sports equipment  
Construct public bathrooms
- 2017-18 **Union Street Launch Ramp:**  
Install lighting \$1,000,000 City/DNR  
Add barrier free picnic tables and benches  
Purchase property to increase parking

### Appendix

#### Community Input

##### 2004 PUBLIC OPINION SURVEY

In 2004, a Public Opinion Survey allowed area residents to rank the adequacy of area recreational facilities in the Tri-Community area, which are presented in the following table.



Recreation Facility	% Response Adequate	% Neither Adequate nor Inadequate	% Response Inadequate	% Response Not Sure
Boat launching facilities	50.3%	5.7%	20.8%	23.1%
Transient boat docks	29.7%	9.9%	28.2%	32.2%
Boat slips (rental)	40.5%	11%	14.7%	33.8%
Boat slips (condo)	40.2%	13.4%	7%	39.4%
Marinas	50.4%	9.4%	13%	27.1%
Swimming beaches	75.4%	7.3%	10.6%	6.7%
Boat service	40.9%	11.9%	11.6%	35.6%
Pump-out facility	25.9%	13.2%	11.7%	49.2%
Fish cleaning station	18.6%	15.2%	14.9%	51.2%
Campgrounds with public access	20.7%	15.3%	31.1%	32.9%
Parks	58.6%	12.1%	19.8%	9.4%
Public restrooms	41.7%	16.7%	32.9%	8.9%
Designated boat mooring sites	19.2%	16.7%	22.2%	41.8%
Designated no wake zones	41.4%	12.2%	15.4%	31.1%
Other public access	21.6%	18%	15%	45.5%
Source: 2005 Tri-Community Comprehensive Plan Update				

As part of the 2008 plan update process a community input sheet was developed for residents who wished to provide input for the plan update. These input forms were made available at community halls, the library and at public functions to give residents an opportunity to react to various questions posed by the Parks and Recreation Committee.

The input sheet started with a ranking of what the community viewed as most important in a 2002 community-wide survey. This provided a frame of reference to which they could react. In general, the things that were important to residents in the 2002 survey continue to be important in





2008. The surveys were provided at Township and City Halls, the library, historic society and places frequented by locals (e.g., coffee shops and the post office).

A series of public meetings were also held to invite input in the plan update process. A copy of that notice is provided at the end of this section.

Following are the tabulation sheets from the cities and school system.

Community Attitude Survey – **Douglas**  
Saugatuck Douglas Area Parks & Recreation Plan



## Tell Us What You Think!

Saugatuck Public Schools, City of Saugatuck, City of the Village of Douglas and Saugatuck Township are working together to update the community's 2002 *Saugatuck Douglas Area Parks & Recreation Plan*. Your thoughts regarding our facilities and programs are welcomed and needed to make this a worthwhile effort.

1. During the 2002 planning process an extensive survey was conducted. Following are key facilities the public wished to see developed (in order of priority at that time). Please number them in order of your priority now. You may cross out those that, in your opinion, do not apply. Add to the list if you wish.

**High (1-3) Medium (4-6) Low (7-10)**

- 1 bike paths **High (8) Medium (2) Low (0)**
  - 4 fitness center **High (3) Medium (0) Low (2)**
  - 8 swimming pool **High (2) Medium (1) Low (2)**
  - 8 ice rink **High (2) Medium (1) Low (2)**
  - 11 additional picnic areas **High (0) Medium (2) Low (2)**
  - 5 additional beach areas **High (3) Medium (0) Low (1)**
  - 9 a sledding or toboggan area **High (2) Medium (0) Low (2)**
  - 6 more Lake Michigan open space **High (2) Medium (4) Low (0)**
  - 3 more rest rooms **High (3) Medium (2) Low (2)**
  - 10 more parks **High (1) Medium (1) Low (2)**
  - 2 more riverfront open space **High (4) Medium (3) Low (0)**
  - 7 more playgrounds **High (2) Medium (1) Low (1)**
  - other **Walking paths to Lake Michigan, Year round exercise program for seniors.**
2. Following are the top programs residents requested in 2002. Please number them in order of your priority now. You may cross out those that, in your opinion, do not apply. Add to the list if you wish.
    - 2 more boating lessons **High (5) Medium (1) Low (0)**
    - 3 computer camp **High (4) Medium (2) Low (1)**
    - 8 technology camp **High (1) Medium (3) Low (1)**



- 1 swimming lessons **High (9) Medium (1) Low (0)**
- 9 science camp **High (1) Medium (2) Low (1)**
- 7 PTO summer enrichment **High (2) Medium (1) Low (2)**
- 4 beach volleyball **High (2) Medium (3) Low (1)**
- 6 golf lessons **High (2) Medium (1) Low (3)**
- 5 tennis lessons **High (3) Medium (1) Low (3)**

3. Please indicate how important it is for the community to do the following.

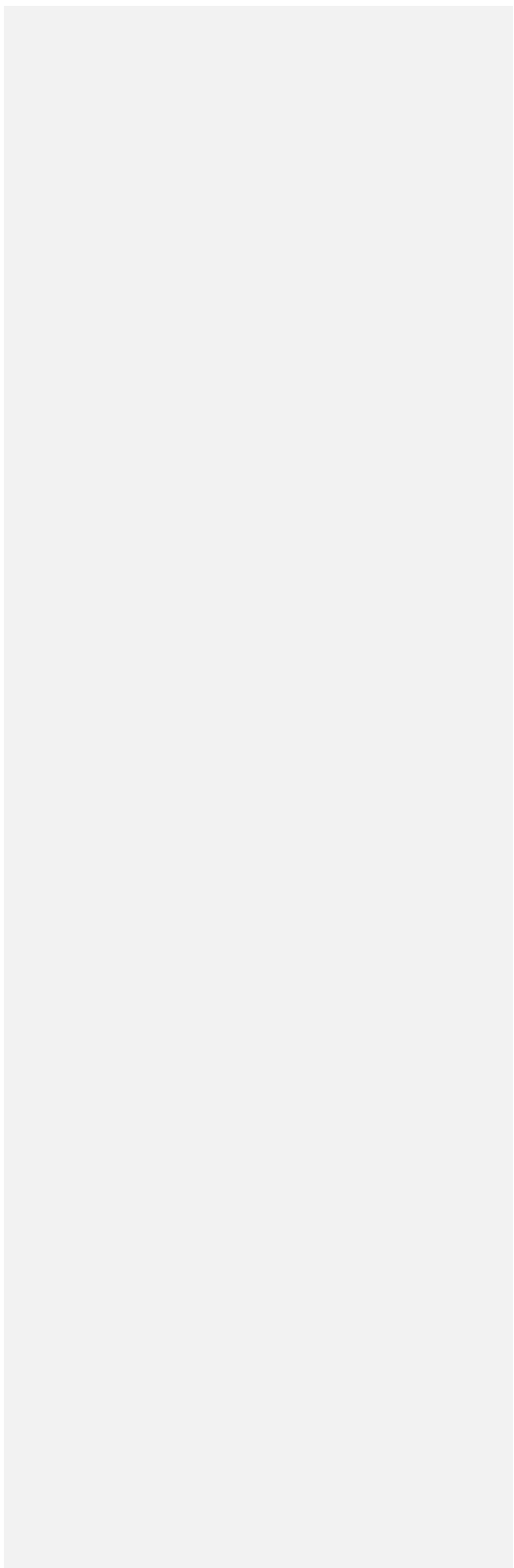
Statement	No Opinion	Not Important	Somewhat Important	Important	Very Important
1. Provide more programming for senior citizens	1	(1) 2	3	(6) 4	(5) 5
2. Provide more programming for grade school children	(2) 1	2	(2) 3	(4) 4	(1) 5
3. Provide more programming for teens and young adults	(1) 1	(2) 2	(3) 3	(3) 4	(2) 5
4. Provide more programming for families	1	(1) 2	(4) 3	(2) 4	(3) 5
5. Provide more art and cultural programming (i.e., non-physical )	1	(1) 2	(6) 3	4	(2) 5
6. Secure regular funding for recreation facilities and programming through a special assessment	(1) 1	(3) 2	3	(3) 4	(1) 5
7. Develop more facilities in existing parks	(1) 1	2	(2) 3	(5) 4	(1) 5
8. Acquire more parkland	(1) 1	(2) 2	(2) 3	(2) 4	(1) 5
9. Acquire lands for trail connections	(2) 1	2	3	(2) 4	(5) 5

10. In which community do you live?

11.  2 Saugatuck Township  10 City of the Village of Douglas  City of Saugatuck



11. Other comments\_ **Beery Field bleachers, More senior events, Bike paths and walking connectors.**





Community Attitude Survey – Saugatuck Township  
Saugatuck Douglas Area Parks & Recreation Plan



## Tell Us What You Think!

Saugatuck Public Schools, City of Saugatuck, City of the Village of Douglas and Saugatuck Township are working together to update the community's 2002 *Saugatuck Douglas Area Parks & Recreation Plan*. Your thoughts regarding our facilities and programs are welcomed and needed to make this a worthwhile effort.

1. During the 2002 planning process an extensive survey was conducted.

Following are key facilities the public wished to see developed (in order of priority at that time). Please number them in order of your priority now. You may cross out those that, in your opinion, do not apply. Add to the list if you wish.

**High (1-3) Medium (4-6) Low (7-10)**

- 1\_bike paths **H-8 M-4 L-2**
- 12\_fitness center **H-0 M-2 L-4**
- 6\_swimming pool **H-4 M-3 L-0**
- 11\_ice rink **H-1 M-1 L-6**
- 9\_additional picnic areas **H-1 M-4 L-3**
- 4\_additional beach areas **H-3 M-9 L-3**
- 10\_a sledding or toboggan area **H-1 M-3 L-4**
- 2\_more Lake Michigan open space **H-7 M-3 L-3**
- 8\_more rest rooms **H-2 M-5 L-3**
- 5\_more parks **H-4 M-3 L-2**
- 3\_more riverfront open space **H-5 M-1 L-6**
- 7\_more playgrounds **H-3 M-1 L-4**
- other **High Speed Internet, Soccer Fields, Step repair at Sundown Park**

2. Following are the top programs residents requested in 2002. Please number them in order of your priority now. You may cross out those that, in your opinion, do not apply. Add to the list if you wish.

- 4\_more boating lessons **H-4 M-8 L-1**
- 3\_computer camp **H-5 M-6 L-2**
- 2\_technology camp **H-7 M-4 L-1**
- 1\_swimming lessons **H-11 M-3 L-1**
- 5\_science camp **H-4 M-5 L-1**
- 9\_PTO summer enrichment **H-1 M-2 L-4**
- 7\_beach volleyball **H-3 M-5 L-2**
- 6\_golf lessons **H-4 M-4 L-6**
- 8\_tennis lessons **H-3 M-3 L-4**
- other **High speed internet, soccer fields** \_\_\_\_\_



3. Please indicate how important it is for the community to do the following.

Statement	No Opinion	Not Important	Somewhat Important	Important	Very Important
1. Provide more programming for senior citizens	1	2	(5) 3	(6) 4	(4) 5
2. Provide more programming for grade school children	(1) 1	2	(3) 3	(6) 4	(5) 5
3. Provide more programming for teens and young adults	1	(1) 2	(1) 3	(6) 4	(5) 5
4. Provide more programming for families	1	2	(4) 3	(4) 4	(5) 5
5. Provide more art and cultural programming (i.e., non-physical )	1	(1) 2	(5) 3	(6) 4	(3) 5
6. Secure regular funding for recreation facilities and programming through a special assessment	(1) 1	2	(4) 3	(5) 4	(4) 5
7. Develop more facilities in existing parks	(1) 1	(1) 2	(4) 3	(6) 4	(2) 5
8. Acquire more parkland	1	(1) 2	(5) 3	(7) 4	(1) 5
10. Acquire lands for trail connections	1	(2) 2	(4) 3	(4) 4	(4) 5

12. In which community do you live?

13\_ Saugatuck Township \_\_\_ City of the Village of Douglas \_1\_ City of Saugatuck

12. Other comments\_\_High Speed Internet, Soccer Fields

---



---



---



---



Community Attitude Survey – **Saugatuck Public Schools**  
Saugatuck Douglas Area Parks & Recreation Plan



## Tell Us What You Think!

Saugatuck Public Schools, City of Saugatuck, City of the Village of Douglas and Saugatuck Township are working together to update the community's 2002 *Saugatuck Douglas Area Parks & Recreation Plan*. Your thoughts regarding our facilities and programs are welcomed and needed to make this a worthwhile effort.

1. During the 2002 planning process an extensive survey was conducted. Following are key facilities the public wished to see developed (in order of priority at that time). Please number them in order of your priority now. You may cross out those that, in your opinion, do not apply. Add to the list if you wish.

**High (1-3) Medium (4-6) Low (7-10)**

- 2 bike paths H -12 M -8 L -7
- 5 fitness center H -9 M -4 L -10
- 1 swimming pool H -14 M -6 L -7
- 10 ice rink H - 4 M - 6 L - 11
- 12 additional picnic areas H - 1 M - 10 L - 7
- 8 additional beach areas H - 5 M - 9 L - 7
- 4 a sledding or toboggan area H - 9 M - 6 L - 10
- 3 more Lake Michigan open space H - 12 M - 4 L - 3
- 6 more rest rooms H - 7 M - 5 L - 9
- 7 more parks H - 6 M - 6 L - 9
- 11 more riverfront open space H - 3 M - 4 L - 10
- 9 more playgrounds H - 5 M - 8 L - 7
- \_\_\_ other \_\_\_ **Boat Launches, Sidewalks**

2. Following are the top programs residents requested in 2002. Please number them in order of your priority now. You may cross out those that, in your opinion, do not apply. Add to the list if you wish.

- 6 more boating lessons H - 7 M - 11 L - 8
- 4 computer camp H - 9 M - 7 L - 5
- 5 technology camp H - 10 M - 2 L - 7
- 1 swimming lessons H - 15 M - 10 L - 2
- 7 science camp H - 6 M - 12 L - 7
- 9 PTO summer enrichment H - 4 M - 6 L - 7
- 8 beach volleyball H - 6 M - 12 L - 3
- 3 golf lessons H - 10 M - 8 L - 3
- 2 tennis lessons H - 15 M - 6 L - 3



\_\_\_ other **Art, Pottery, Painting**

3. Please indicate how important it is for the community to do the following.

Statement	No Opinion	Not Important	Somewhat Important	Important	Very Important
1. Provide more programming for senior citizens	(2) 1	(1) 2	(8) 3	(9) 4	(7) 5
2. Provide more programming for grade school children	(2) 1	(2) 2	(2) 3	(11) 4	(10) 5
3. Provide more programming for teens and young adults	1	(1) 2	(3) 3	(9) 4	(14) 5
4. Provide more programming for families	1	(5) 2	(2) 3	(9) 4	(13) 5
5. Provide more art and cultural programming (i.e., non-physical )	(3) 1	(3) 2	(9) 3	(6) 4	(4) 5
6. Secure regular funding for recreation facilities and programming through a special assessment	(1) 1	2	(8) 3	(5) 4	(11) 5
7. Develop more facilities in existing parks	(2) 1	(5) 2	(3) 3	(11) 4	(6) 5
8. Acquire more parkland	(1) 1	(4) 2	(5) 3	(9) 4	(6) 5
11. Acquire lands for trail connections	1	(2) 2	(3) 3	(12) 4	(7) 5

13. In which community do you live?

\_\_10 Saugatuck Township \_\_4 City of the Village of Douglas \_\_8City of Saugatuck

\_\_3 Fennville \_\_2 Laketown

Other comments: **Schultz Park Needs Restrooms/ Running Water, More Nature Parks**



**Public Notice  
Community Park & Recreation Plan Update**

Saugatuck Public Schools, City of Saugatuck, City of the Village of Douglas and Saugatuck Township are working together to update the community's 2002 *Saugatuck/ Douglas Area Parks & Recreation Plan*. The plan helps guide facilities programming and funding decisions and makes the community eligible for various state funding programs. Your thoughts regarding our facilities and programs are welcomed and needed to make this a worthwhile effort. There are several opportunities for input as follows:

**A written survey** available February 15th at Douglas Library, Douglas Police Department, Douglas City Hall, Saugatuck City Hall, Saugatuck Township Hall, Saugatuck Public School Buildings, Douglas Historical Society, Douglas Post Office, Saugatuck Post Office and at the Saugatuck Community Recreation Fundraiser Saturday, February 16<sup>th</sup> beginning at 8:00.p.m..

**Via the internet** at the following websites:

City of Village of Douglas: [www.douglasmichigan.com](http://www.douglasmichigan.com)  
City of Saugatuck: [www.saugatuckcity.com](http://www.saugatuckcity.com)  
Saugatuck Township: [www.saugatucktownship.org](http://www.saugatucktownship.org)  
Saugatuck Public Schools: [www.saugatuckps.com](http://www.saugatuckps.com)

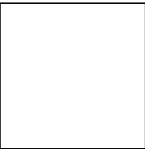
**At a public meetings** at respective communities as follows:

Saugatuck Public School Board, Monday, March 3<sup>rd</sup>, 5:30pm, DES Library  
City of the Village of Douglas Council meeting, Monday, March 4<sup>th</sup>, 7:00 p.m., 86 W. Center  
Saugatuck Township Board meeting, Wednesday, March 5<sup>th</sup>, 7:00 p.m., 3461 Blue Star Highway  
City of Saugatuck Council meeting, Monday, March 10<sup>th</sup>, 7:00 p.m., City Hall 102 Butler

**Note that all citizens are welcomed to attend any community's meeting.**

**IN SOME WAY, PLEASE LET US KNOW HOW YOU FEEL!**





**Minutes and Resolutions**

